



Finished Size of Project: **52½" x 72½" (1.33m x 1.84m)**

Fabric Collection Name & Fabric Designer: **Pocketful of Posies by Gail Pan**

Techniques: **Fussy Cutting, Piecing**

Designed by: **Gail Pan of Gail Pan Designs**

Skill Level: **Beginner**

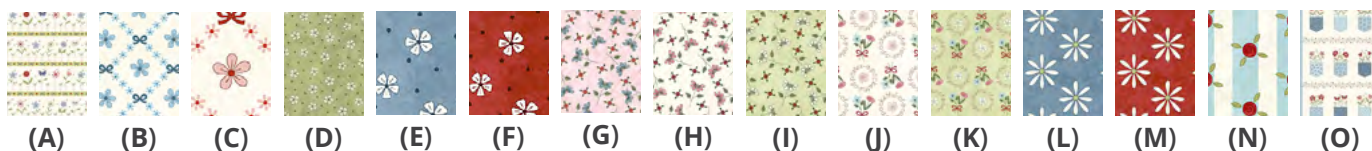
Tech Edited by: **Susan Guzman**

Pocketful of Posies Quilt

Fabric Requirements

DESIGN	COLOR	ITEM ID	YARDAGE
(A) Border Stripe	Cream	3392-44	¼ yard (0.23m)
(B) Trellis Bows	Cream Blue	3393-47	¼ yard (0.23m)
(C) Trellis Bows	Cream Red	3393-48	¼ yard (0.23m)
(D) Posies Tossed	Green	3394-66	¼ yard (0.23m)
(E) Posies Tossed	Blue	3394-77	¼ yard (0.23m)
(F) Posies Tossed	Red	3394-88*	⅝ yard (0.57m)
(G) Tossed Flowers and Buds	Light Pink	3395-22	¼ yard (0.23m)
(H) Tossed Flowers and Buds	Cream	3395-44	¼ yard (0.23m)
(I) Tossed Flowers and Buds	Green	3395-66	1¼ yards (1.14m)
(J) Posie Words	Cream	3397-44	¼ yard (0.23m)
(K) Posie Words	Green	3397-66	¼ yard (0.23m)
(L) Set Daisies	Light Blue	3398-17	¼ yard (0.23m)
(M) Set Daisies	Red	3398-88	½ yard (0.46m)
(N) Stripes	Cream Blue	3399-47	¼ yard (0.23m)
(O) Pocketful of Posies Panel	Cream	3400P-44	⅔ yard (0.61m)

* includes binding



Backing (Purchased Separately)

44" (1.12m) wide

Posies Tossed Blue 3394-77 4½ yards (4.11m)

OR

108" (2.74m) wide 1¾ yards (1.60m)



Backing
44"

Additional Materials:

- 100% cotton thread in colors to match
- 6½" square ruler for fussy cutting
- 60" x 80" (1.52m x 2.03m) batting

All possible care has been taken to ensure the accuracy of this pattern. We are not responsible for printing errors or the manner in which individual work varies.

Please read the instructions carefully before starting this project. If kitting it is recommended a sample is made to confirm accuracy.

All free projects are intended to remain free and are not for resale.

Cutting Instructions

Notes:

- Please make sure to check henryglassfabrics.net for pattern updates prior to starting the project.
- All strips are cut across the width of fabric (WOF) from selvage to selvage edge unless otherwise noted

Fabric A, cut:

(4) fussy cut 6½" squares

Fabric B, cut:

(1) 4½" x WOF; subcut
(3) 4 ½" squares
(3) 2½" x 4½" rectangles

Fabric C, cut:

(1) 4½" x WOF; subcut
(4) 4½" squares
(4) 2½" x 4½" rectangles

Fabric D, cut:

(1) 4½" x WOF; subcut
(4) 4½" squares
(4) 2½" x 4½" rectangles

Fabric E, cut:

(2) 1½" x WOF; subcut
(2) 1½" x 42" for inner side borders
(2) 1¾" x WOF; subcut
(2) 1¾" x 24½" for inner top/bottom borders

Fabric F, cut:

(7) 2½" x WOF for binding

Fabric G, cut:

(1) 4½" x WOF; subcut
(4) 4½" squares
(3) 2½" x 4½" rectangles

Fabric H, cut:

(1) 4½" x WOF; subcut
(4) 4½" squares
(4) 2½" x 4½" rectangles

Fabric I, cut:

(6) 6½" x WOF; sew the strips together end-to-end with diagonal seams. Cut (2) 6½" x 60½" for outer side borders and (2) 6½" x 52½" for outer top/bottom borders

Fabric J, cut:

(1) 4½" x WOF; subcut
(3) 4½" squares
(4) 2½" x 4½" rectangles

Fabric K, cut:

(1) 4½" x WOF; subcut
(4) 4½" squares
(4) 2½" x 4½" rectangles

Fabric L, cut:

(1) 4½" x WOF; subcut
(4) 4½" squares
(4) 2½" x 4½" rectangles

Fabric M, cut:

(6) 2½" x WOF; sew the strips together end-to-end with diagonal seams. Cut (2) 2½" x 56½" for middle side borders and (2) 2½" x 40" for middle top/bottom borders

Fabric N, cut:

(1) 4½" x WOF; subcut
(4) 4½" squares
(4) 2½" x 4½" rectangles

Fabric O (Panel), cut:

Center and trim panel to measure 22½" x 42".

Sewing

All seam allowances are $\frac{1}{4}$ ". Sew pieces right sides together. Press seam allowances open unless otherwise indicated.

TIP: If you wish for all directional fabrics to go in the same direction in your finished quilt, pay attention to the orientation and placement of the fabrics as you sew them together (Step 1, Unit 1) while keeping in mind where the units will live in your final quilt.

1. Sew (1) assorted $4\frac{1}{2}$ " square to (1) assorted $2\frac{1}{2}$ " x $4\frac{1}{2}$ " rectangle to make Unit 1 (**Fig. 1**). Repeat to make (34) assorted Unit 1. Unit 1 will measure $4\frac{1}{2}$ " x $6\frac{1}{2}$ ".

Fig. 1



2. Noting orientation, sew (11) Unit 1 together, to make side patchwork row (**Fig. 2**). Make (2) side patchwork rows measuring $6\frac{1}{2}$ " x $44\frac{1}{2}$ ". Set aside.

Fig. 2



3. Noting orientation, sew (6) Unit 1 together, to make top/bottom patchwork row (**Fig. 3**). Then sew (1) **Fabric A** $6\frac{1}{2}$ " square to each end of the row (**Fig. 4**). Make (2) top/bottom patchwork rows measuring $6\frac{1}{2}$ " x $36\frac{1}{2}$ ". Set aside.

Fig. 3

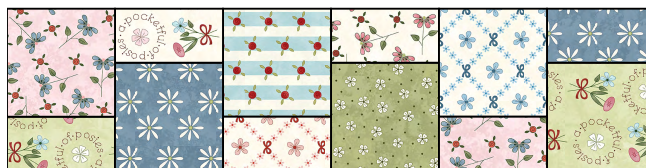
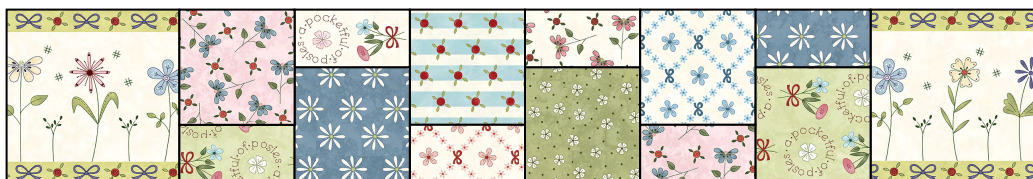


Fig. 4



All possible care has been taken to ensure the accuracy of this pattern. We are not responsible for printing errors or the manner in which individual work varies.

Please read the instructions carefully before starting this project. If kitting it is recommended a sample is made to confirm accuracy.

All free projects are intended to remain free and are not for resale.

Quilt Top Assembly

Follow the Quilt Layout (page 6) while assembling the quilt top.

4. Sew (1) **Fabric E** 1½" x 42" inner border to opposite long sides of the **Fabric P** panel. Sew (1) **Fabric E** 1¾" x 24½" inner border to the top and bottom edges. Quilt top will measure 24½" x 44½".
5. Sew side patchwork rows to opposite long sides of the quilt top. Sew top/bottom patchwork rows to the top and bottom edges. Quilt top will measure 36½" x 56½".
6. Sew (1) **Fabric M** 2½" x 56½" middle border to opposite long sides of the quilt top. Sew (1) **Fabric M** 2½" x 40½" middle border to the top and bottom edges. Quilt top will measure 40½" x 60½".
7. Sew (1) **Fabric I** 6½" x 60½" outer border to opposite long sides of the quilt top. Sew (1) **Fabric I** 6½" x 52½" outer border to both the top and bottom edges to complete the quilt top measuring 52½" x 72½".

Finishing

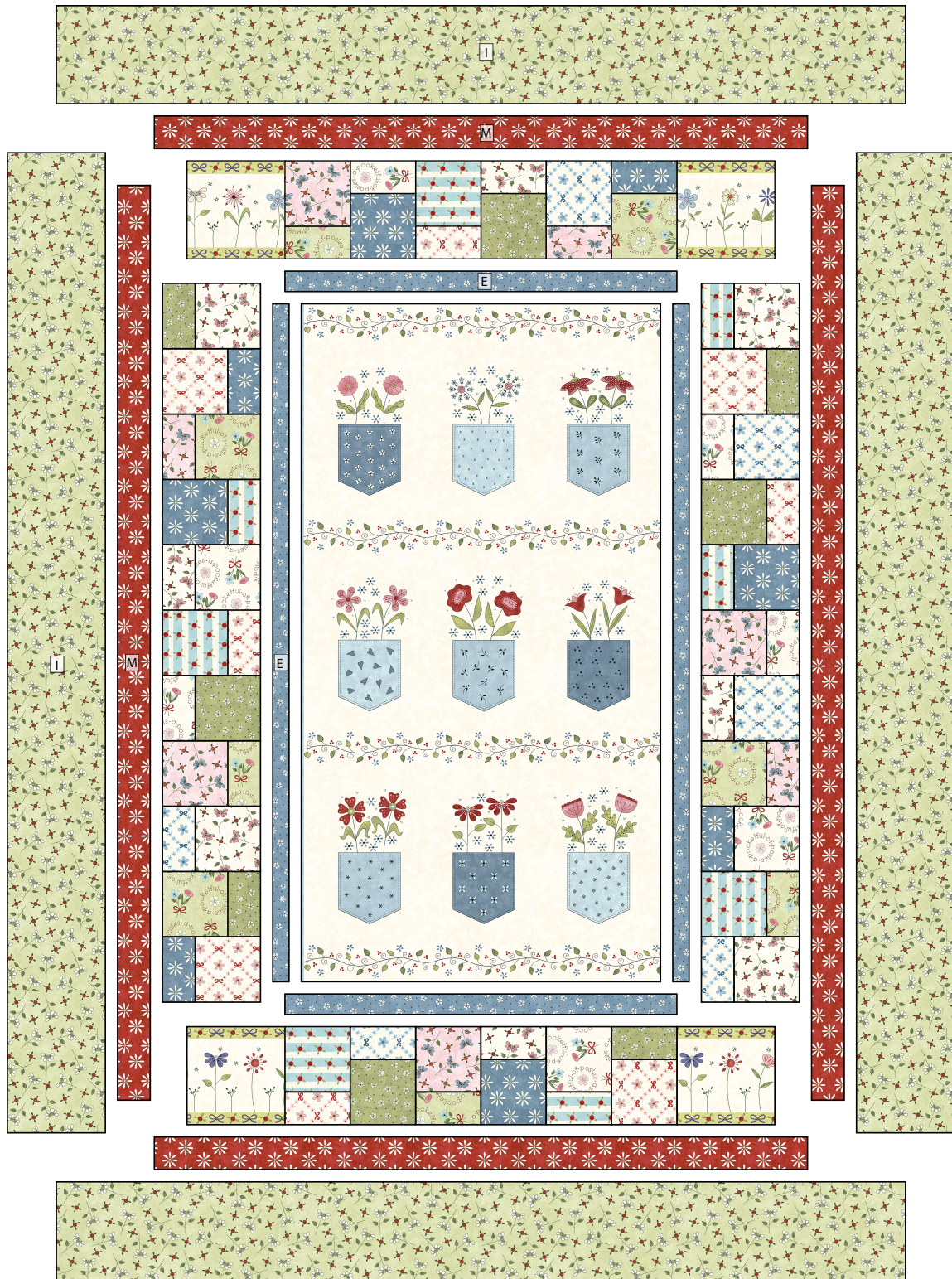
8. Sew together the (7) 2½" x WOF **Fabric F** binding strips end to end using diagonal seams. Press the seams open. Press the binding strip in half, wrong sides together.
9. Trim the selvage edges from the backing fabric. Cut the yardage into two equal lengths and use a ½" seam to sew the sections together along one long edge to make the quilt backing. Press.
10. Layer the backing (wrong side up), batting, and quilt top (right side up). Baste the layers together and quilt as desired. Trim excess batting and backing even with the top of the quilt.
11. Leaving an 8" tail of binding and beginning along an edge of the quilt top, match raw edges of the binding to the raw edges of the quilt top. Sew the binding to the outside edge around all four sides and miter corners. Stop sewing approximately 12" from where you started and backstitch.
12. Lay both loose ends of binding flat along the quilt edge. Where these two loose ends meet, fold them back onto themselves and press to form a crease. Using this crease as your stitching line, sew the two open ends of the binding together, right sides matching. Trim seam to ¼" and press seam open. Finish sewing the binding to the quilt top.
13. Turn the binding over the raw edge to the back of the quilt and hand or machine stitch in place.

All possible care has been taken to ensure the accuracy of this pattern. We are not responsible for printing errors or the manner in which individual work varies.

Please read the instructions carefully before starting this project. If kitting it is recommended a sample is made to confirm accuracy.

All free projects are intended to remain free and are not for resale.

Quilt Layout



All possible care has been taken to ensure the accuracy of this pattern. We are not responsible for printing errors or the manner in which individual work varies.

Please read the instructions carefully before starting this project. If kitting it is recommended a sample is made to confirm accuracy.

All free projects are intended to remain free and are not for resale.