

Pocketful of Posies

by Gail Pan









Quilt size: 54" x 60" (1.37m x 1.52m)

Skill Level: Advanced Beginner

Bolero Quilt

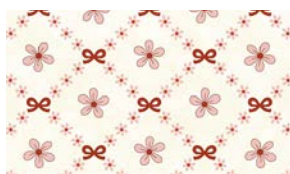
Designed by Villa Rosa Designs
www.villarosadesigns.com

Bolero Quilt Ordering Guide

SKU	Yards	Meters	6 Kits	12 Kits
 3392-44	2 1/2 yds	2.29m	2 bolts	3 bolts
 3393-48	1/2 yds	0.46m	1 bolt	1 bolt
 3394-77	1/2 yds	0.46m	1 bolt	1 bolt
 3395-22	1/2 yds	0.46m	1 bolt	1 bolt
 3397-44	1/2 yds	0.46m	1 bolt	1 bolt
 3397-66	1/2 yds	0.46m	1 bolt	1 bolt
 3398-88	1/2 yds	0.46m	1 bolt	1 bolt
 3399-48*	3/4 yds	0.69m	1 bolt	1 bolt
Backing Fabric Option				
3395-44	4 yds	3.66m	2 bolts	4 bolts
* Indicates binding fabric. FO = 18" x 22" (0.45m x 0.55m) All fabric quantities are based on 15yd bolts unless otherwise indicated.				



3392-44
Border Stripe
Cream



3393-48
Trellis Bows
Cream Red



3394-77
Posies Tossed
Blue



3395-22
Tossed Flowers and Buds
Light Pink



3397-44
Posie Words
Cream



3397-66
Posie Words
Green



3398-88
Set Daisies
Red



3399-48*
Stripes
Cream Red