

Fairy Garden Quilt



Finished Quilt Size: **76" x 76" (1.93m x 1.93m)**

Fabric Collection: **Down the Fairy Path**

Technique: **Pieced**

Designed by: **Lisa Swenson Ruble**

Skill Level: **Advanced Beginner**

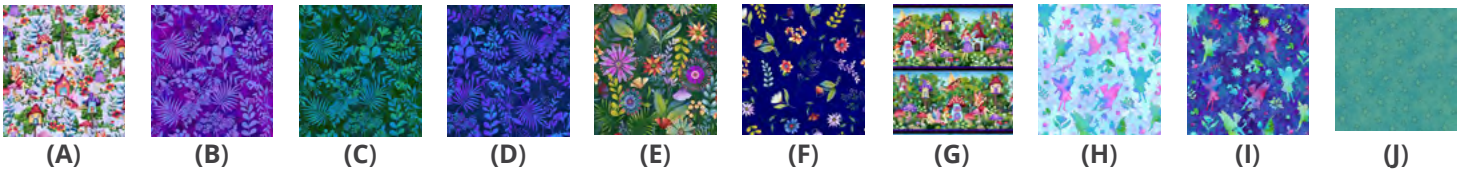
Tech Edited by: **Quilt Pattern Writers**

Fairy Garden Quilt

Fabric Requirements

DESIGN	COLOR	ITEM ID	YARDAGE
(A) Fairies	Lilac	3429-50	$\frac{2}{3}$ yard (0.61m)
(B) Fern Silhouettes	Purple	3432-55	1 $\frac{5}{8}$ yards (1.49m)
(C) Fern Silhouettes	Forest Multi	3432-66	$\frac{1}{4}$ yard (0.23m)
(D) Fern Silhouettes	Royal	3432-77	$\frac{7}{8}$ yard (0.80m)
(E) Medium Wildflowers	Forest Multi	3433-66	$\frac{1}{4}$ yard (0.23m)
(F) Mini Wildflowers	Royal Multi	3434-77	$\frac{3}{4}$ yard (0.69m)
(G) Large Border Stripe	Forest Multi	3436-66	1 $\frac{5}{8}$ yards (1.49m)
(H) Fairy Silhouettes	Light Blue	3438-17	$\frac{1}{4}$ yard (0.23m)
(I) Fairy Silhouettes	Royal Multi	3438-77	$\frac{1}{4}$ yard (0.23m)
(J) Starry Basics	Teal	8294-61*	1 $\frac{3}{4}$ yards (1.60m)

* includes binding



Backing (Purchased Separately)

44" (1.12m) wide

Fern Silhouettes

Forest Multi

3432-66

4 $\frac{3}{4}$ yards (4.34m)

OR

108" (2.74m) wide

Flora Dora 108in

Purple

3350W-55

2 $\frac{3}{8}$ yards (2.17m)



Backing
44"



Backing
108"

Additional Materials:

- 100% cotton thread in colors to match
- Batting 84" x 84" (2.13m x 2.13m)

All possible care has been taken to ensure the accuracy of this pattern. We are not responsible for printing errors or the manner in which individual work varies.

Please read the instructions carefully before starting this project. If kitting it is recommended a sample is made to confirm accuracy.

All free projects are intended to remain free and are not for resale.

Fairy Garden Quilt

Cutting

Notes:

- Make sure to check henryglassfabrics.net for pattern updates prior to starting the project.
- All strips are cut across the width of fabric (WOF) from selvage to selvage edge unless otherwise noted.

Fabric A, cut:

- (1) 18½" x WOF; subcut
 - (1) 18½" square and (4) 4½" squares

Fabric B, cut:

- (1) 4½" x WOF; subcut
 - (4) 4½" squares
- (8) 3½" x WOF; sew the strips together end to end with diagonal seams and cut
 - (2) 3½" x 76½" and (2) 3½" x 70½"
- (3) 3 ½" x WOF; subcut
 - (2) 3½" x 26½" and (2) 3½" x 20½"

Fabric C, cut:

- (1) 4½" x WOF; subcut
 - (4) 4½" squares

Fabric D, cut:

- (3) 4½" x WOF; sew the strips together end to end with diagonal seams and cut
 - (2) 4½" x 46½" and (4) 4½" squares
- (2) 4½" x WOF; subcut
 - (2) 4½" x 38½"

Fabric E, cut:

- (1) 4½" x WOF; subcut
 - (4) 4½" squares

Fabric F, cut:

- (2) 10½" x WOF; subcut
 - (4) 10½" squares and (4) 4½" squares

Fabric G, cut:

- Fussy cut (4) 10½" x 48½" LOF

Fabric H, cut:

- (1) 4½" x WOF; subcut
 - (4) 4½" squares

Fabric I, cut:

- (1) 4½" x WOF; subcut
 - (4) 4½" squares

Fabric J, cut:

- (8) 2½" x WOF strips for the binding
- (12) 1½" x WOF; sew the strips together end to end with diagonal seams and cut
 - (2) 1½" x 70½", (2) 1½" x 68½",
 - (2) 1½" x 48½", and (2) 1½" x 46½"
- (10) 1½" x WOF; subcut
 - (2) 1½" x 38½", (2) 1½" x 36½"
 - (2) 1½" x 28½", (2) 1½" x 26½",
 - (2) 1½" x 20½", and (2) 1½" x 18½"

All possible care has been taken to ensure the accuracy of this pattern. We are not responsible for printing errors or the manner in which individual work varies.

Please read the instructions carefully before starting this project. If kitting it is recommended a sample is made to confirm accuracy.

All free projects are intended to remain free and are not for resale.

Sewing

Notes:

- All seam allowances are $\frac{1}{4}$ " (.64cm) unless otherwise noted. Sew pieces right sides together. Press seam allowances open unless otherwise indicated.
- Follow Quilt Center Layout (page 5) and the Quilt Layout (page 6) while assembling the quilt top.

1. Sew (1) **Fabric J** $1\frac{1}{2}$ " x $18\frac{1}{2}$ " strip to the left and right sides of (1) **Fabric A** $18\frac{1}{2}$ " square. Sew (1) **Fabric J** $1\frac{1}{2}$ " x $20\frac{1}{2}$ " strip to the top and bottom.
2. Sew (1) **Fabric B** $3\frac{1}{2}$ " x $20\frac{1}{2}$ " strip to the left and right sides of the step 1 unit. Sew (1) **Fabric B** $3\frac{1}{2}$ " x $26\frac{1}{2}$ " strip to the top and bottom.
3. Sew (1) **Fabric J** $1\frac{1}{2}$ " x $26\frac{1}{2}$ " strip to the left and right sides of the step 2 unit. Sew (1) **Fabric J** $1\frac{1}{2}$ " x $28\frac{1}{2}$ " strip to the top and bottom.
4. Sew together (1) each **Fabric A, D, E, F, C, H, and I** $4\frac{1}{2}$ " squares into a vertical row. Make (2) total measuring $4\frac{1}{2}$ " x $28\frac{1}{2}$ ". Sew to left and right sides of the step 3 unit. Sew together (2) **Fabric B** and (1) each **Fabric A, D, E, F, C, H, and I** $4\frac{1}{2}$ " squares into a horizontal row. Make (2) total measuring $4\frac{1}{2}$ " x $36\frac{1}{2}$ ". Sew to the top and bottom to complete the quilt center that measures $36\frac{1}{2}$ " square.
5. Sew (1) **Fabric J** $1\frac{1}{2}$ " x $36\frac{1}{2}$ " strip to the left and right sides of the quilt center. Sew (1) **Fabric J** $1\frac{1}{2}$ " x $38\frac{1}{2}$ " strip to the top and bottom.
6. Sew (1) **Fabric D** $4\frac{1}{2}$ " x $38\frac{1}{2}$ " strip to the left and right sides of the step 5 unit. Sew (1) **Fabric D** $4\frac{1}{2}$ " x $46\frac{1}{2}$ " strip to the top and bottom.
7. Sew (1) **Fabric J** $1\frac{1}{2}$ " x $46\frac{1}{2}$ " strip to the left and right sides of the step 6 unit. Sew (1) **Fabric J** $1\frac{1}{2}$ " x $48\frac{1}{2}$ " strip to the top and bottom.
8. Sew (1) **Fabric G** $10\frac{1}{2}$ " x $48\frac{1}{2}$ " strip to the left and right sides of the step 7 unit. Sew (1) **Fabric F** $10\frac{1}{2}$ " square to both short ends of (1) **Fabric G** $10\frac{1}{2}$ " x $48\frac{1}{2}$ " strip. Make (2) total measuring $10\frac{1}{2}$ " x $68\frac{1}{2}$ ". Sew to the top and bottom.
9. Sew (1) **Fabric J** $1\frac{1}{2}$ " x $68\frac{1}{2}$ " strip to the left and right sides of the step 8 unit. Sew (1) **Fabric J** $1\frac{1}{2}$ " x $70\frac{1}{2}$ " strip to the top and bottom.
10. Sew (1) **Fabric B** $3\frac{1}{2}$ " x $70\frac{1}{2}$ " strip to the left and right sides of the step 9 unit. Sew (1) **Fabric B** $3\frac{1}{2}$ " x $76\frac{1}{2}$ " strip to the top and bottom to complete the quilt top. Quilt top will measure $76\frac{1}{2}$ " square.

All possible care has been taken to ensure the accuracy of this pattern. We are not responsible for printing errors or the manner in which individual work varies.

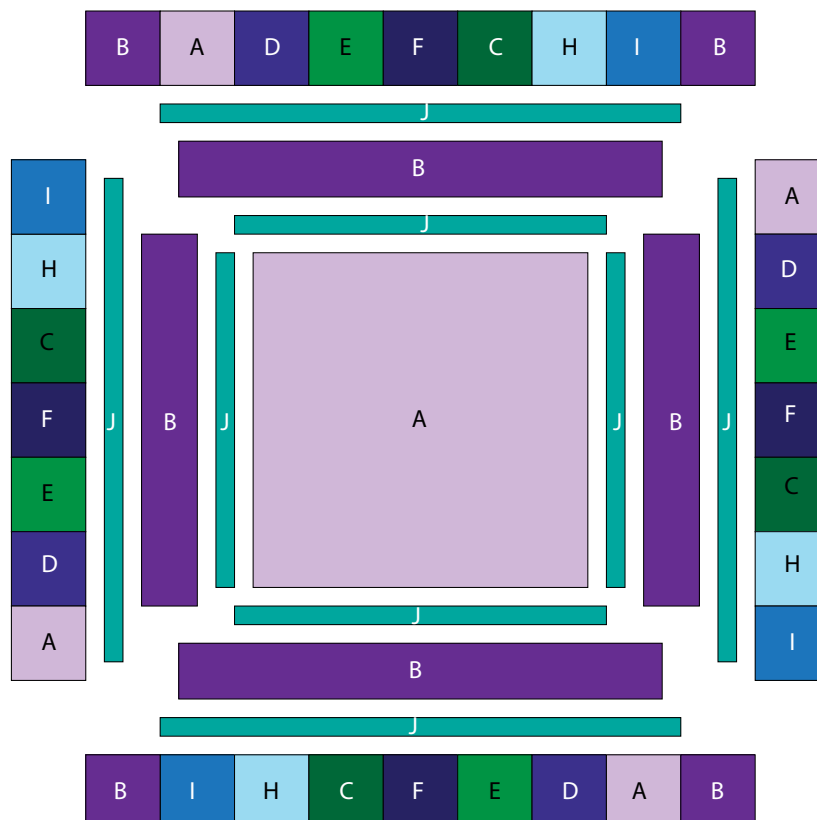
Please read the instructions carefully before starting this project. If kitting it is recommended a sample is made to confirm accuracy.

All free projects are intended to remain free and are not for resale.

Finishing

11. Sew together the (8) 2½" x WOF **Fabric J** binding strips end to end using diagonal seams. Press the seams open. Press the binding strip in half wrong sides together.
12. Layer the backing (wrong side up), batting, and quilt top (right side up). Baste the layers together and quilt as desired. Trim excess batting and backing even with the quilt top.
13. Leaving an 8" tail of binding and beginning along an edge of the quilt top, match raw edges of the binding to the raw edges of the quilt top. Sew the binding to the outside edge around all four sides and miter corners. Stop sewing approximately 12" from where you started and backstitch.
14. Lay both loose ends of binding flat along the quilt edge. Where these two loose ends meet, fold them back onto themselves and press to form a crease. Using this crease as your stitching line, sew the two open ends of the binding together, right sides matching. Trim seam to ¼" and press seam open. Finish sewing the binding to the quilt top.
15. Turn the binding over the raw edge to the back of the quilt and hand or machine stitch in place.

Quilt Center Layout

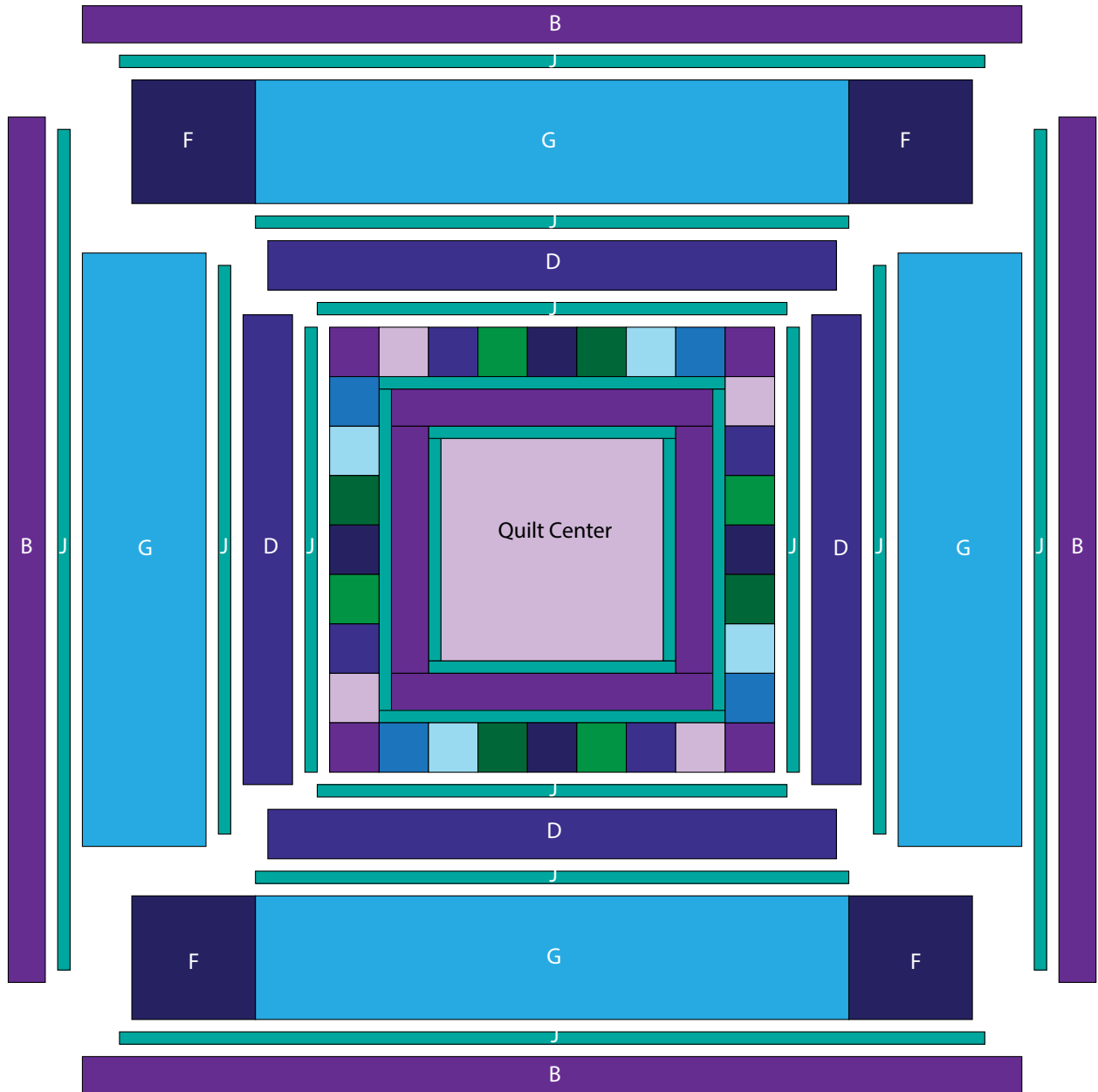


All possible care has been taken to ensure the accuracy of this pattern. We are not responsible for printing errors or the manner in which individual work varies.

Please read the instructions carefully before starting this project. If kitting it is recommended a sample is made to confirm accuracy.

All free projects are intended to remain free and are not for resale.

Quilt Layout



All possible care has been taken to ensure the accuracy of this pattern. We are not responsible for printing errors or the manner in which individual work varies.

Please read the instructions carefully before starting this project. If kitting it is recommended a sample is made to confirm accuracy.

All free projects are intended to remain free and are not for resale.