

Pup Stars



Finished Size of Project: **62" x 62" (1.57m x 1.57m)**

Fabric Collection Name and Designer: **Diva Pups by Robert Giordano**

Technique: **Pieced**

Designed by: **Lisa Swenson Ruble**

Tech Edited by: **Quilt Pattern Writers**

Skill Level: **Advanced Beginner**

Fabric Requirements

DESIGN	COLOR	ITEM ID	YARDAGE
(A) Paw Prints	Black	1739-99	1/3 yard (0.30m)
(B) Accessories	White	1740-01	7/8 yard (0.80m)
(C) Words	Black	1742-99	1/3 yard (0.30m)
(D) Newspaper	White	1746-01	1/2 yard (0.46m)
(E) Blocks Panel	Black	1748P-99	2/3 yard (0.61m)
(F) Twinkle Basics	Pink	135-22	2/3 yard (0.61m)
(G) Modern Melody	White	1063-01W	2/3 yard (0.61m)
(H) Priscilla's Polkas	Blk/White	1030-99*	1 5/8 yards (1.49m)

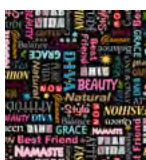
* includes binding



(A)



(B)



(C)



(D)



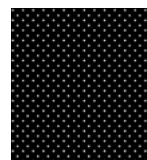
(E)



(F)



(G)



(H)

Backing (Purchased Separately)

44" (1.12m) wide

Tossed Puppies

Aqua

1738-11

4 yards (3.66m)

OR

108" (2.74m) wide

2 yards (1.83m)



Backing
44"

Additional Materials:

- 100% cotton thread in colors to match
- Batting: 70" x 70" (1.78m x 1.78m)
- Thread and sewing supplies

All possible care has been taken to ensure the accuracy of this pattern. We are not responsible for printing errors or the manner in which individual work varies.

Please read the instructions carefully before starting this project. If kitting it is recommended a sample is made to confirm accuracy.

All free projects are intended to remain free and are not for resale.

Cutting

Notes:

- Please make sure to check henryglassfabrics.net for pattern updates prior to starting the project.
- All strips are cut across the width of fabric (WOF) from selvage to selvage edge unless otherwise noted.

Fabric A, cut:

- (1) 4" x WOF; subcut
 - (8) 4" squares
- (1) 3½" x WOF; subcut
 - (4) 3½" squares

Fabric B, cut:

- (6) 4½" x WOF; sew the strips together end to end with diagonal seams and cut
 - (2) 4½" x 62½"
 - (2) 4½" x 54½"

Fabric C, cut:

- (1) 4" x WOF; subcut
 - (8) 4" squares
- (1) 3½" x WOF; subcut
 - (4) 3½" squares

Fabric D, cut:

- (5) 2½" x WOF; sew the strips together end to end with diagonal seams and cut
 - (2) 2½" x 52½"
 - (2) 2½" x 48½"

Fabric E, cut:

- Fussy cut (8) 10" wide x 9½" tall rectangles, centering blocks

Fabric F, cut:

- (10) 2" x WOF; subcut
 - (16) 2" x 12½"
 - (16) 2" x 9½"

Fabric G, cut:

- (2) 4" x WOF; subcut
 - (16) 4" squares
- (3) 3½" x WOF; subcut
 - (32) 3½" squares

Fabric H, cut:

- (7) 2½" x WOF for the binding
- (6) 2" x WOF; subcut
 - (16) 2" x 12½"
- (4) 1¾" x WOF; subcut
 - (16) 1¾" x 9½"
- (6) 1½" x WOF; sew the strips together end to end with diagonal seams and cut
 - (2) 1½" x 54½"
 - (2) 1½" x 52½"

All possible care has been taken to ensure the accuracy of this pattern. We are not responsible for printing errors or the manner in which individual work varies.

Please read the instructions carefully before starting this project. If kitting it is recommended a sample is made to confirm accuracy.

All free projects are intended to remain free and are not for resale.

Sewing

Notes:

- All seam allowances are $\frac{1}{4}$ " (.64cm) unless otherwise noted.
- Sew pieces right sides together. Press seam allowances open unless otherwise indicated.

1. Draw a diagonal line on the wrong side of all **Fabric G** 4" squares. Layer (1) marked square right sides together on (1) **Fabric C** 4" square. Stitch $\frac{1}{4}$ " on both sides of the drawn line, cut on the line, and press units open to make (2) CG units (**Fig. 1**). Trim to measure $3\frac{1}{2}$ " square. Make a total of (16) CG units. In the same manner, make a total of (16) AG units (**Fig. 2**).
2. Lay out (4) CG units, (4) **Fabric G** $3\frac{1}{2}$ " squares and (1) **Fabric C** $3\frac{1}{2}$ " square into (3) rows of (3). Sew into rows and join the rows to make (1) C star unit measuring $9\frac{1}{2}$ " square. Make (4) total (**Fig. 3**). In the same manner, make a total of (4) A star units (**Fig. 4**).

Fig. 1

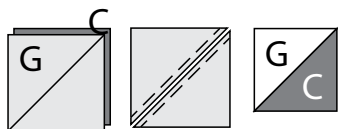


Fig. 2



Fig. 3

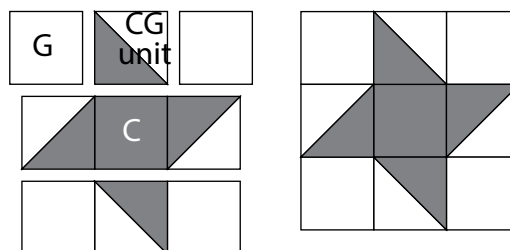
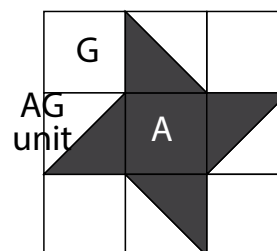


Fig. 4



3. Sew (1) **Fabric F** 2" x 9½" rectangle to the left and right sides of (1) C star unit. Sew (1) **Fabric F** 2" x 12½" rectangles to the top and bottom to make (1) Block One (**Fig. 5**). Make a total of (4) Block One measuring 12½" x 12½". In the same manner, make (4) total Block Two using A star units. (**Fig. 6**)
4. Sew (1) **Fabric H** 1¾" x 9½" rectangle to the left and right sides of (1) **Fabric E** 10" x 9½" rectangle. Sew (1) **Fabric H** 2" x 12½" rectangle to the top and bottom to make (1) Block Three (**Fig. 7**). Make a total of (8) Block Three measuring 12½" x 12½".

Fig. 5

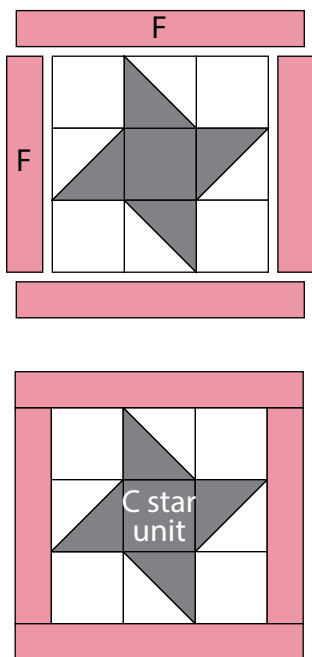


Fig. 6

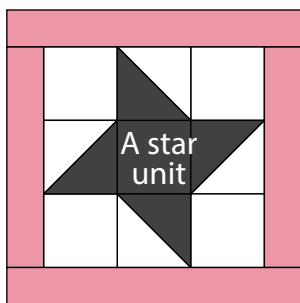
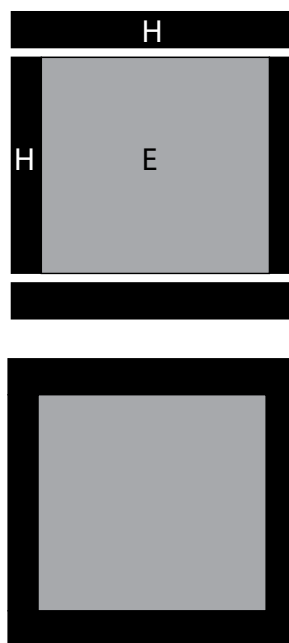


Fig. 7



All possible care has been taken to ensure the accuracy of this pattern. We are not responsible for printing errors or the manner in which individual work varies.

Please read the instructions carefully before starting this project. If kitting it is recommended a sample is made to confirm accuracy.

All free projects are intended to remain free and are not for resale.

Quilt Top Assembly

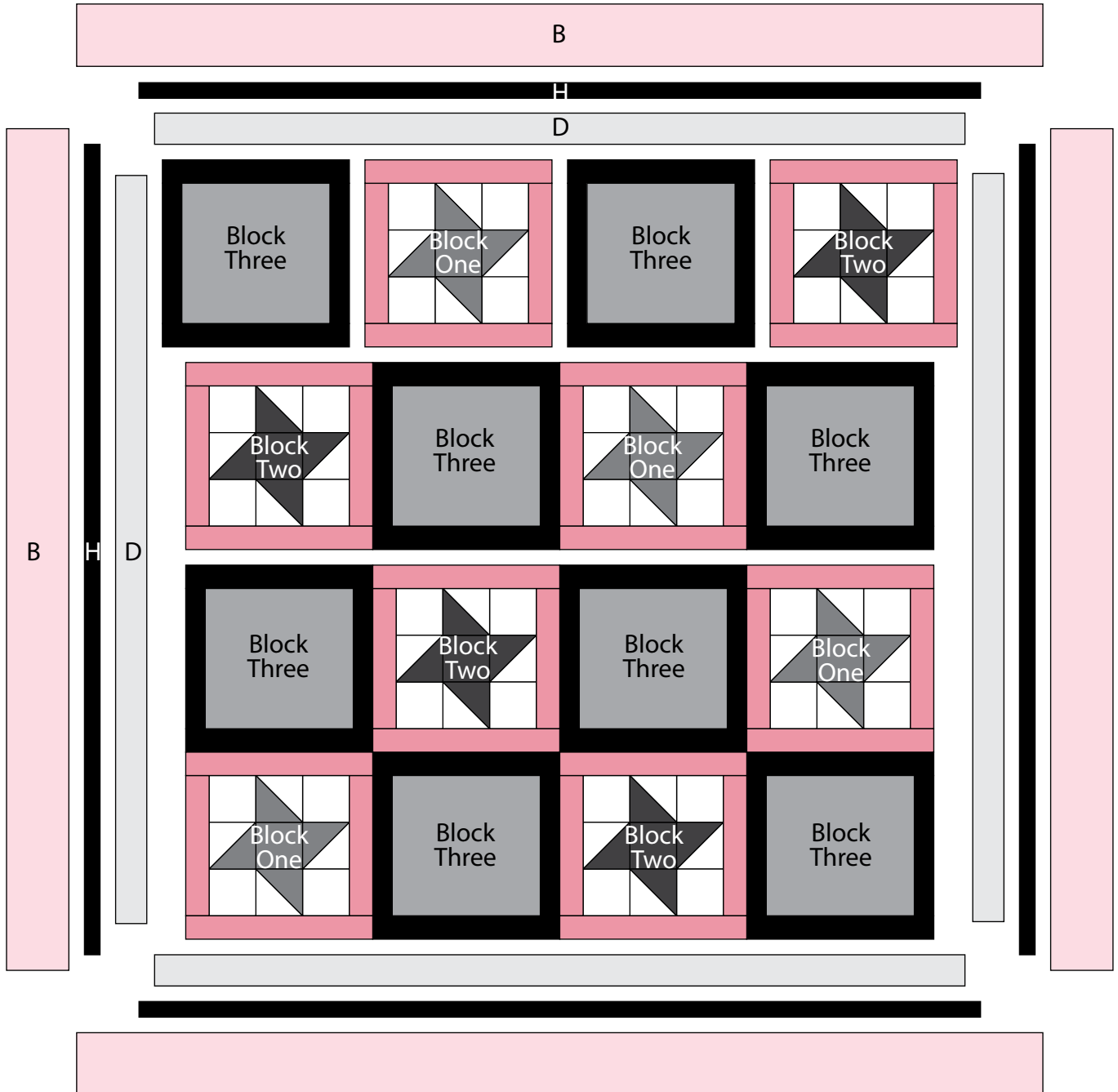
Follow the Quilt Layout (page 7) while assembling the quilt top.

5. Noting block orientation, lay out (1) each Block One and Block Two and (2) Block Three to make a block row. Make a total of (4) block rows measuring 12½" x 48½".
6. Sew the block rows together to complete the quilt center which will measure 48½" square.
7. Sew (1) **Fabric D** 2½" x 48½" strip to opposite sides of the quilt center. Sew (1) **Fabric D** 2½" x 52½" strip to both the top and bottom.
8. Sew (1) **Fabric H** 1½" x 52½" strip to opposite sides of the quilt. Sew (1) **Fabric H** 1½" x 54½" strip to both the top and bottom.
9. Sew (1) **Fabric B** 4½" x 54½" strip to opposite sides of the quilt. Sew (1) **Fabric B** 4½" x 62½" strip to both the top and bottom to complete the quilt top. Quilt top will measure 62½" square.

Finishing

10. Sew together the (7) 2½" x WOF **Fabric H** binding strips end to end using diagonal seams. Press the seams open. Press the binding strip in half wrong sides together.
11. Layer the backing (wrong side up), batting, and quilt top (right side up). Baste the layers together and quilt as desired. Trim excess batting and backing even with the top of the quilt.
12. Leaving an 8" tail of binding and beginning along an edge of the quilt top, match raw edges of the binding to the raw edges of the quilt top. Sew the binding to the outside edge around all four sides and miter corners. Stop sewing approximately 12" from where you started and backstitch.
13. Lay both loose ends of binding flat along the quilt edge. Where these two loose ends meet, fold them back onto themselves and press to form a crease. Using this crease as your stitching line, sew the two open ends of the binding together, right sides matching. Trim seam to ¼" and press seam open. Finish sewing the binding to the quilt top.
14. Turn the binding over the raw edge to the back of the quilt and hand or machine stitch in place.

Quilt Layout



All possible care has been taken to ensure the accuracy of this pattern. We are not responsible for printing errors or the manner in which individual work varies.

Please read the instructions carefully before starting this project. If kitting it is recommended a sample is made to confirm accuracy.

All free projects are intended to remain free and are not for resale.