

Two by Two

by Leanne Anderson and Kaytlyn Kuebler



Quilt size: 62 1/2" x 81 1/2" (1.59m x 2.07m)

Skill Level: Advanced Beginner

The Arc Panel Quilt

Designed by Leanne Anderson & Kaytlyn Kuebler

www.thewholecountrycaboodle.com



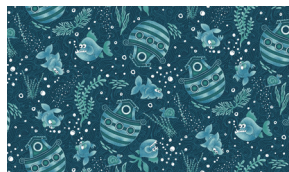
Henry Glass & Co., Inc.

The Arc Panel Quilt Ordering Guide

SKU	Yards	Meters	6 Kits	12 Kits
 1750-88	1/4 yds	0.23m	1 bolt	1 bolt
 1751-77	1/3 yds	0.30m	1 bolt	1 bolt
 1754-01	1/4 yds	0.23m	1 bolt	1 bolt
 1756-22	1/4 yds	0.23m	1 bolt	1 bolt
 1759-17	2 1/2 yds	2.29m	2 bolts	3 bolts
 1760-66	2/3 yds	0.61m	1 bolt	1 bolt
 1762P-11	2/3 yds	0.61m	1 bolt	1 bolt
 8294-38	1/3 yds	0.30m	1 bolt	1 bolt
 8624-38	1/3 yds	0.30m	1 bolt	1 bolt
 9611-66	3/4 yds	0.69m	1 bolt	1 bolt
 9612-31	1/4 yds	0.23m	1 bolt	1 bolt
 9612-88*	2/3 yds	0.61m	1 bolt	1 bolt
Backing Fabric Option				
1757-77	5 yds	4.57m	3 bolts	5 bolts
* Indicates binding fabric. FO = 18" x 22" (0.45m x 0.55m) All fabric quantities are based on 15yd bolts unless otherwise indicated.				



1750-88
Doves
Red



1751-77
Tonal Ark
Navy



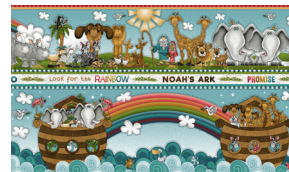
1754-01
Words
White



1762P-17
Panel
Teal



1756-22
Flamingos
Pink



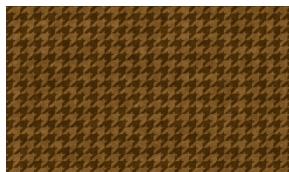
1759-17
Border Stripe
Teal



1760-66
Continuous Yardage
Green



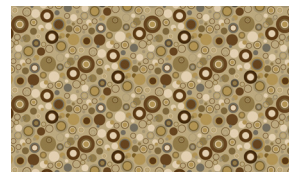
8294-38
Starry Basic
Brown



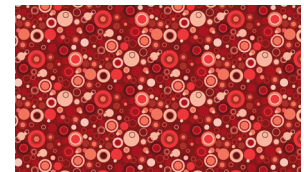
8624-38
Houndstooth Basics
Brown



9611-66
Bias Plaid Basics
Green



9612-31
Bubble Dot Basics
Tan



9612-88*
Bubble Dot Basics
Red

Henry Glass & Co. Inc.

49 West 37th Street - New York, NY 10018 - Tel: 800-294-9495 - Fax: 212-679-4578 - www.henryglassfabrics.net