

# Formal Garden

• A Free Project Sheet •  
• NOT FOR RESALE •

By Hannah West

Quilt Design by Matthew Pridemore



Skill Level: Advanced Beginner

 Henry Glass & Co., Inc.



facebook

Finished Quilt Size: 58" x 58"  
(147.32 cm x 147.32 cm)

49 West 37th Street, New York, NY 10018

tel: 212-686-5194 fax: 212-532-3525

Toll Free: 800-294-9495

[www.henryglassfabrics.net](http://www.henryglassfabrics.net)

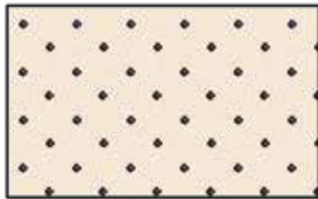
Please check our website for pattern updates before starting this project.



# FORMAL GARDEN

Finished Quilt Size: 58" x 58"  
(147.32 cm x 147.32 cm)

## Fabrics in the Pansy for Your Thoughts Collection



Cross  
Cream – 1698-33



Cross  
Purple – 1698-55



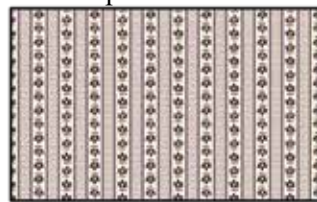
Tri Flowers  
Cream – 1699-33



Tri Flowers  
Maroon – 1699-58



Angles  
Green – 1700-66



Flower Stripe  
Cream – 1701-33



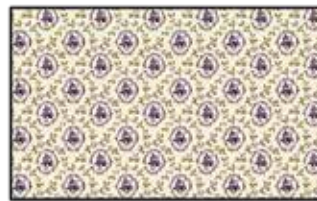
Mini Dot  
Purple – 1702-55



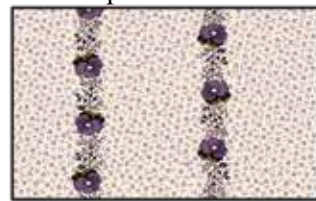
Mini Dot  
Green – 1702-66



Flower Buds  
Purple – 1703-55



Flower Rings  
Cream – 1704-33



Pansy Chain  
Cream – 1705-33



Flower Wiggle  
Purple – 1706-55



Pansy Pots  
Cream – 1707-33



Pansy Lattice  
Cream/Purple – 1708-35



Block Panel  
Purple – 1709P-55

## Materials

1 panel	Block Panel - Purple (A)	1709P-55
¾ yard (0.69m)	Flower Buds - Purple (B)	1703-55
¼ yard (0.23m)	Mini Dot - Green (C)	1702-66
½ yard (0.46m)	Cross - Purple (D)	1698-55
⅜ yard (0.34m)	Flower Stripe - Cream (E)	1701-33
⅓ yard (0.30m)	Tri Flowers - Maroon (F)	1699-58
¼ yard (0.23m)	Angles - Green (G)	1700-66
¼ yard (0.23m)	Cross - Cream (H)	1698-33
1 yard (0.91m)	Mini Dot - Purple (I)	1702-55*
⅞ yard (0.80m)	Pansy Lattice - Cream/Purple (J)	1708-35
¼ yard (0.23m)	Tri Flowers - Cream (K)	1699-33
⅛ yard (0.11m)	Pansy Pots - Cream (L)	1707-33
3 ¾ yards (3.43m)	Flower Wiggle - Purple (Backing)	1706-55

\*Includes binding

**You will also need:** Fusible web

## Cutting Instructions

*Please note: All strips are cut across the width of fabric (WOF) from selvage to selvage unless otherwise noted.*

### From the Block Panel - Purple (A):

- Fussy cut (1) 32 ½" x 32 ½" square, centered on the panel.

### From the Flower Buds - Purple (B), cut:

- (2) 2" x 32 ½" WOF strips.
- (2) 2" x 35 ½" WOF strips.
- (3) 1 ½" x WOF strips. Sew the strips together end to end with diagonal seams and cut (2) 1 ½" x 44 ½" strips.
- (3) 1 ½" x WOF strips. Sew the strips together end to end with diagonal seams and cut (2) 1 ½" x 46 ½" strips.
- See instructions to cut (32) Large Wedges.

### From the Mini Dot - Green (C), cut:

- (2) 1 ½" x 34 ½" WOF strips.
- (2) 1 ½" x 36 ½" WOF strips.

### From the Cross - Purple (D), cut:

- (3) 4 ½" x WOF strips. Sub-cut (20) 4 ½" squares.

### From the Flower Stripe - Cream (E), cut:

- (3) 2 ⅞" x WOF strips. Sub-cut (40) 2 ⅞" squares.

### From the Tri Flowers - Maroon (F), cut:

- (2) 2 ⅞" x WOF strips. Sub-cut (20) 2 ⅞" squares.
- See instructions to cut (32) Small Wedges.

### From the Angles - Green (G), cut:

- (1) 2 ⅞" x WOF strip. Sub-cut (10) 2 ⅞" squares.

### From the Cross - Cream (H), cut:

- (1) 2 ⅞" x WOF strip. Sub-cut (10) 2 ⅞" squares.

### From the Mini Dot - Purple (I), cut:

- (9) 1 ½" x WOF strips. Sew the strips together end to end with diagonal seams and cut (8) 1 ½" x 46 ½" strips.
- (6) 2 ½" x WOF strips for the binding.

### From the Pansy Lattice - Cream/Purple (J), cut:

- (5) 4 ½" x WOF strips. Sew the strips together end to end with diagonal seams and cut (4) 4 ½" x 46 ½" strips.

### From the Tri Flowers - Cream (K), cut:

- (1) 6 ½" x WOF strip. Sub-cut (4) 6 ½" squares.

### From the Pansy Pots - Cream (L), cut:

- See instructions to fussy cut (4) Flower Centers, centered on small round flowers.

### From the Flower Wiggle - Purple (Backing), cut:

- (2) 66" x WOF strips for the backing. Sew the strips together and trim to make the 66" x 66" back.

## Block Assembly

*Note: The arrows in figures represent the fabric print direction. Pay attention to the fabric and unit orientations when assembling the various components. Use a ¼" seam allowance with right sides together (RST) unless otherwise noted.*

1. Sew (1) 2" x 32 ½" Fabric B strip to each side of the 32 ½" x 32 ½" Fabric A square. Sew (1) 2" x 35 ½" Fabric B strip to the top and to the bottom of the Fabric A square to make the Center Block (Fig. 1). **Trim the block to measure 34 ½" x 34 ½"**.

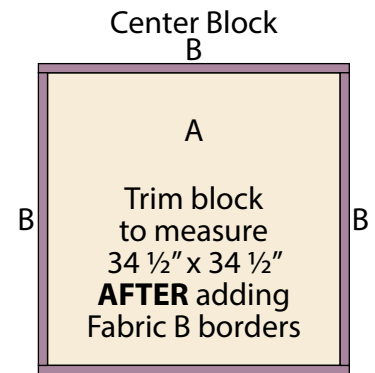


Fig. 1 B

2. Place (1) 2 ⅞" Fabric H square on top of (1) 2 ⅞" Fabric E square, right sides together. Draw a line across the diagonal of the top square (Fig. 2). Sew ¼" away from each side of the drawn diagonal line (Fig. 2). Cut the (2) squares apart on the drawn diagonal line (Fig. 3) to make (2) half-square triangles. Trim the half-square triangles to measure 2 ½" square to make (2) Unit 1 squares (Fig. 4). Repeat to make (20) Unit 1 squares total.

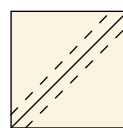


Fig. 2

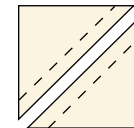


Fig. 3

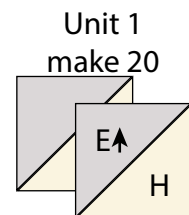


Fig. 4

# FORMAL GARDEN

3. Repeat Step 2 and refer to Figures 5-6 for fabric identification, placement and orientation to make (20) Unit 2 squares and (40) Unit 3 squares.

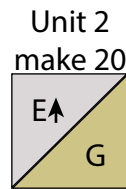


Fig. 5



Fig. 6

4. Refer to Figure 7 and sew together (2) Unit 1 squares and (2) Unit 2 squares into a 2 x 2 matrix to make (1) 4 1/2" Block One square. Repeat to make (10) Block One squares total.

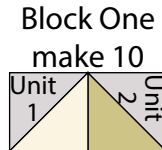


Fig. 7

5. Refer to Figure 8 and sew together (4) Unit 3 squares into a 2 x 2 matrix to make (1) 4 1/2" Block Two square. Repeat to make (10) Block Two squares.

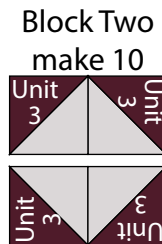


Fig. 8

6. Following the manufacturer's instructions, trace the listed number of each template onto the paper side of the fusible web. Roughly cut out each template about 1/8" outside the drawn lines.

7. Press each template onto the wrong side of the fabrics as listed on the templates. Cut out each template on the drawn lines.

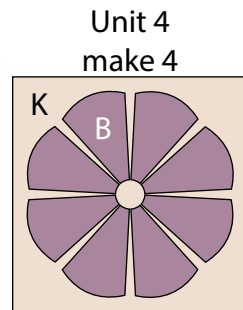


Fig. 9

8. Refer to Figure 9 to arrange and press the (8) Fabric B large wedges onto (1) 6 1/2" Fabric K square to make (1) Unit 4 square. Repeat to make (4) Unit 4 squares total.

9. Refer to Figure 10 to add (8) Fabric F small wedges to (1) Unit 4 square to make (1) Unit 5 square. Repeat to make (4) Unit 5 squares total.

10. Refer to Figure 11 to add (1) Fabric L circle to the center of (1) Unit 5 square to make (1) Block Three square. Repeat to make (4) Block Three squares total.

11. Finish the raw edges of each shape with a decorative stitch such as a buttonhole or satin stitch to complete each Block Three square.

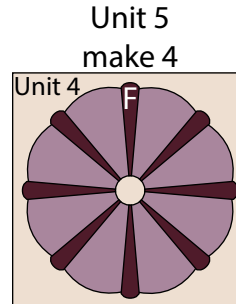


Fig. 10

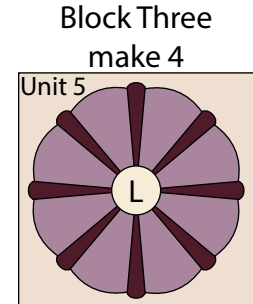


Fig. 11

12. Sew together (1) Block One square, (1) 4 1/2" Fabric D square, (1) Block Two square, (1) 4 1/2" Fabric D square, (1) Block One square, (1) 4 1/2" Fabric D square, (1) Block Two square, (1) 4 1/2" Fabric D square and (1) Block One square, in that order from top to bottom, to make (1) Inner Side Border (Fig. 12). Repeat to make a second Inner Side Border.

Inner Side Border  
make 2



Fig. 12

13. Sew together (1) 4 1/2" Fabric D square, (1) Block Two square, (1) 4 1/2" Fabric D square, (1) Block One square, (1) 4 1/2" Fabric D square, (1) Block Two square, (1) 4 1/2" Fabric D square, (1) Block One square, (1) 4 1/2" Fabric D square, (1) Block Two square and (1) 4 1/2" Fabric D square, in that order from left to right, to make the Inner Top Border (Fig. 13). Repeat to make the Inner Bottom Border.

Inner Top/Bottom Border  
make 2



Fig. 13



14. Sew (1) 1 ½" x 46 ½" Fabric I strip to each side of (1) 4 ½" x 46 ½" Fabric J strip lengthwise to make (1) Outer Side Border (Fig. 14). Repeat to make a second Outer Side Border.

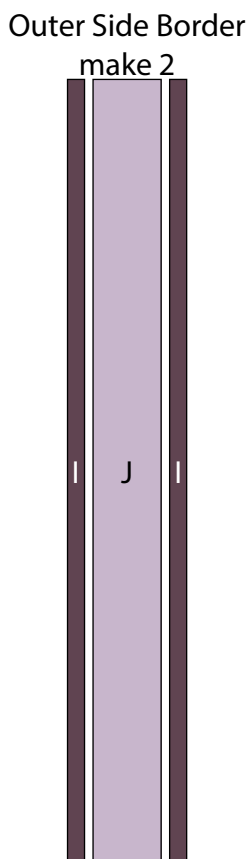


Fig. 14

15. Sew (1) 1 ½" x 46 ½" Fabric I strip to the top and to the bottom of (1) 4 ½" x 46 ½" Fabric J strip lengthwise. Sew (1) Block Three square to each end of the newly sewn strip to make the Outer Top Border (Fig. 15). Repeat to make the Outer Bottom Border.

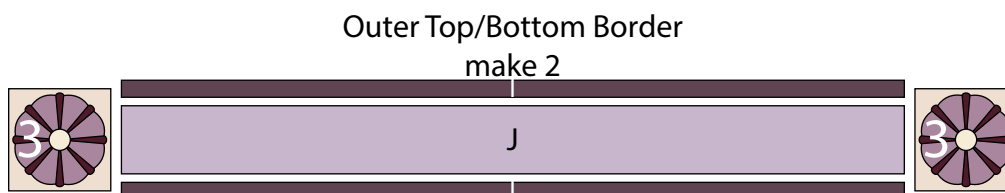


Fig. 15

### Quilt Top Assembly

*(Follow the Quilt Layout while assembling the quilt top.)*

16. Sew (1) 1 ½" x 34 ½" Fabric C strip to each side of the Center Block. Sew (1) 1 ½" x 36 ½" Fabric C strip to the top and to the bottom of the Center Block.

17. Sew (1) Inner Side Border to each side of the Center Block.

18. Sew the Inner Top Border and Inner Bottom Border to the top and to the bottom of the Center Block.

19. Sew (1) 1 ½" x 44 ½" Fabric B strip to each side of the Center Block. Sew (1) 1 ½" x 46 ½" Fabric B strip to the top and to the bottom of the Center Block.

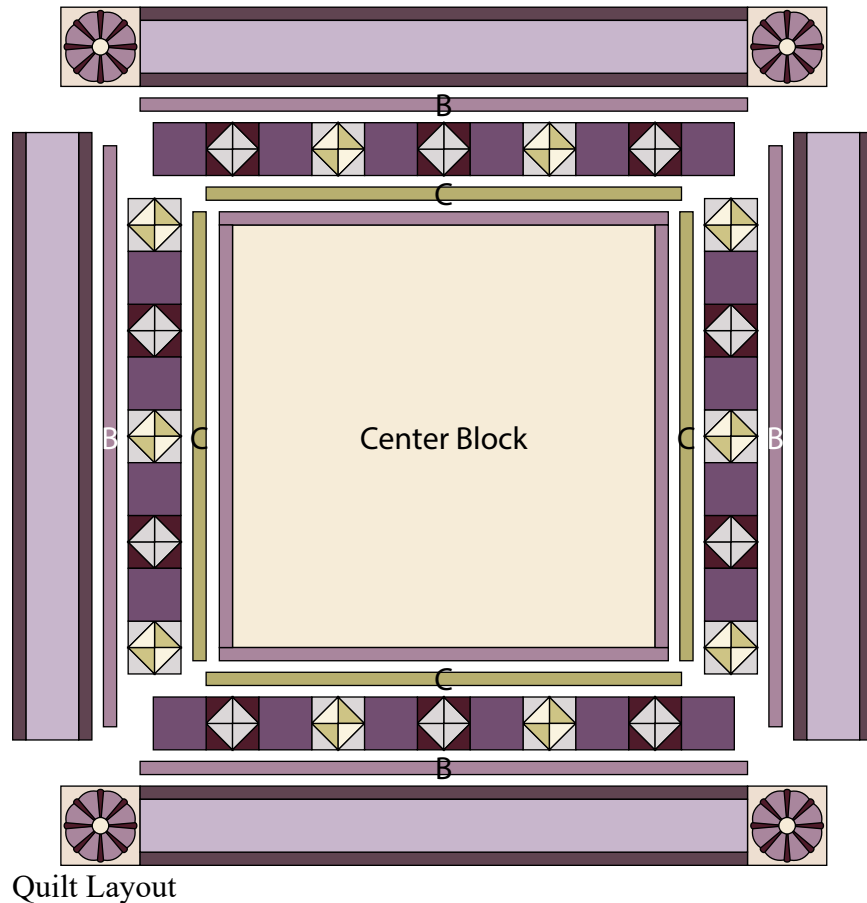
20. Sew (1) Outer Side Border to each side of the Center Block.

21. Sew the Outer Top Border and the Outer Bottom Border to the top and to the bottom of the Center Block to make the quilt top.

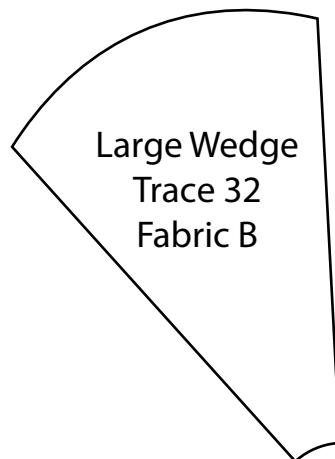
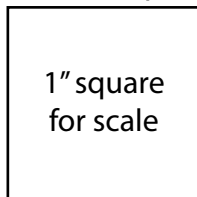
22. Layer and quilt as desired.

23. Sew the (6) 2 ½" x WOF Fabric I strips together, end to end with 45-degree seams, to make the binding. Fold this long strip in half lengthwise with wrong sides together and press.

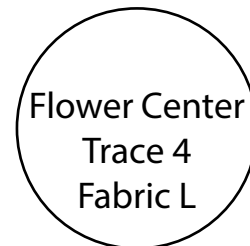
24. Bind as desired.



100% Templates



Small Wedge  
Trace 32  
Fabric F



Every effort has been made to ensure that all projects are error free. All the information is presented in good faith, however no warranty can be given nor results guaranteed as we have no control over the execution of instructions. Therefore, we assume no responsibility for the use of this information or damages that may occur as a result. When errors are brought to our attention, we make every effort to correct and post a revision as soon as possible. Please make sure to check [www.henryglassfabrics.net](http://www.henryglassfabrics.net) for pattern updates prior to starting the project. We also recommend that you test the project prior to cutting for kits. Finally, all free projects are intended to remain free to you and are not for resale.