

Garden Visitors

• A Free Project Sheet
• NOT FOR RESALE

Erica Christopher



facebook

Skill Level: Beginner

 Henry Glass & Co., Inc.



Finished Runner Size: 44" x 24"
(111.76 cm x 60.96 cm)

Finished Place Mat Size: 18" x 12"
(45.72 cm x 30.48 cm)

49 West 37th Street, New York, NY 10018

tel: 212-686-5194 fax: 212-532-3525

Toll Free: 800-294-9495

www.henryglassfabrics.net

Please check our website for pattern updates before starting this project.

GARDEN VISITORS

Finished Runner Size: 44" x 24"
 (111.76 cm x 60.96 cm)
 Finished Place Mat Size: 18" x 12"
 (45.72 cm x 30.48 cm)

Fabrics in the Garden Symphony Collection



Allover Flowers
Teal – 3420-76



Feathers
Cream – 3421-44



Scrolls
Cream – 3422-44



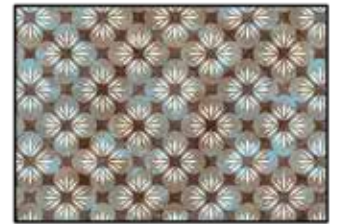
Scrolls
Blue – 3422-77



Leaves
Cream – 3423-44



Leaves
Teal – 3423-76



Petal Dots
Taupe – 3424-36



Petal Dots
Teal – 3424-76



Blocks 8 x 10
Teal – 3425-76



Panel
Cream – 3426P-44



Apron
Cream – 3427P-44



Collage
Cream – 3428-44

GARDEN VISITORS

Runner Materials

$\frac{2}{3}$ yard (0.61m)	Collage - Cream (A)	3428-44
$\frac{3}{8}$ yard (0.34m)	Petal Dots - Taupe (B)	3424-36
$\frac{3}{8}$ yard (0.34m)	Scrolls - Blue (C)	3422-77*
1 $\frac{1}{2}$ yards (1.37m)	Scrolls - Cream (Backing)	3422-44

*Includes binding

Runner Cutting Instructions

Please note: All strips are cut across the width of fabric (WOF) from selvage to selvage unless otherwise noted.

From the Collage - Cream (A), cut:

- (1) 20 $\frac{1}{2}$ " x 40 $\frac{1}{2}$ " WOF strip.

From the Petal Dots - Taupe (B), cut:

- (1) 2 $\frac{1}{2}$ " x WOF strip. Sub-cut (2) 2 $\frac{1}{2}$ " x 20 $\frac{1}{2}$ " strips.
- (3) 2 $\frac{1}{2}$ " x WOF strips. Sew the strips together end to end with diagonal seams and cut (2) 2 $\frac{1}{2}$ " x 44 $\frac{1}{2}$ " strips.

From the Scrolls - Blue (C), cut:

- (4) 2 $\frac{1}{2}$ " x WOF strips for the binding.

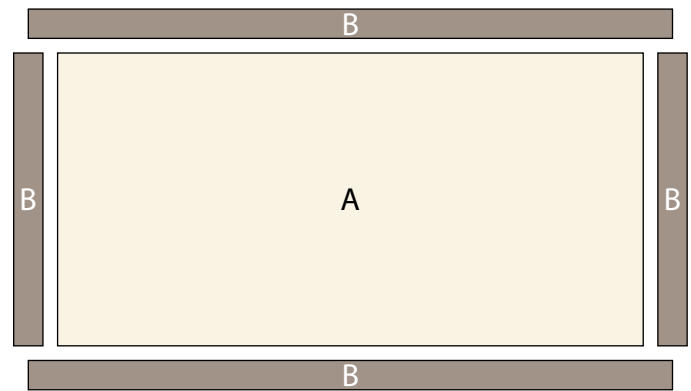
From the Scrolls - Cream (Backing), cut:

- (1) 52" x 32" WOF strip for the backing.

Runner Assembly

Follow the Runner Layout while assembling the runner top.
Use a $\frac{1}{4}$ " seam allowance with right sides together (RST) unless otherwise noted.

1. Sew (1) 2 $\frac{1}{2}$ " x 20 $\frac{1}{2}$ " Fabric B strip to each side of the 20 $\frac{1}{2}$ " x 40 $\frac{1}{2}$ " Fabric A rectangle. Sew (1) 2 $\frac{1}{2}$ " x 44 $\frac{1}{2}$ " Fabric B strip to the top and to the bottom of the Fabric A rectangle to make the Runner Top.
2. Layer and quilt as desired.
3. Sew the (4) 2 $\frac{1}{2}$ " x WOF Fabric C strips together, end to end with 45-degree seams, to make the binding. Fold this long strip in half lengthwise with wrong sides together and press.
4. Bind as desired.



Runner Layout

GARDEN VISITORS

Place Mat Materials (makes 4)

7/8 yard (0.80m)	Collage - Cream (A)	3428-44
1/3 yard (0.30m)	Petal Dots - Taupe (B)	3424-36*
1/3 yard (0.30m)	Petal Dots - Teal (C)	3424-76*
1 1/3 yards (1.22m)	Feathers - Cream (Backing)	3421-44

*Includes binding

Place Mat Cutting Instructions

Please note: All strips are cut across the width of fabric (WOF) from selvage to selvage edge unless otherwise noted.

From the Collage - Cream (A), cut:

- (2) 12 1/2" x WOF strips. Sub-cut (4) 12 1/2" x 18 1/2" rectangles.

From the Petal Dots - Taupe (B), cut:

- (4) 2 1/2" x WOF strips for binding (2) place mats.

From the Petal Dots - Teal (C), cut:

- (4) 2 1/2" x WOF strips for binding (2) place mats.

From the Feathers - Cream (Backing), cut:

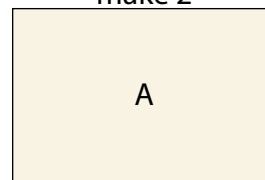
- (2) 22" x WOF strips. Sub-cut (4) 22" x 16" rectangles for the backings.

Place Mat Assembly

Follow the Place Mat Layouts while assembling the runner top. Use a 1/4" seam allowance with right sides together (RST) unless otherwise noted.

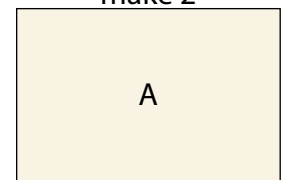
1. Layer and quilt as desired.
2. Sew the (4) 2 1/2" x WOF Fabric B strips together end to end with 45-degree seams. Fold this long strip in half lengthwise with wrong sides together and press. Cut the strip into (2) equal pieces.
3. Sew the (4) 2 1/2" x WOF Fabric C strips together, end to end with 45-degree seams. Fold this long strip in half lengthwise with wrong sides together and press. Cut the strip into (2) equal pieces.
4. Bind as desired using (2) Fabric B strips for (2) Place Mats and (2) Fabric C strips for (2) Place Mats.

Place Mat #1
make 2



Place Mat Layout #1

Place Mat #2
make 2



Place Mat Layout #2

Every effort has been made to ensure that all projects are error free. All the information is presented in good faith, however no warranty can be given nor results guaranteed as we have no control over the execution of instructions. Therefore, we assume no responsibility for the use of this information or damages that may occur as a result. When errors are brought to our attention, we make every effort to correct and post a revision as soon as possible. Please make sure to check www.henryglassfabrics.net for pattern updates prior to starting the project. We also recommend that you test the project prior to cutting for kits. Finally, all free projects are intended to remain free to you and are not for resale.