

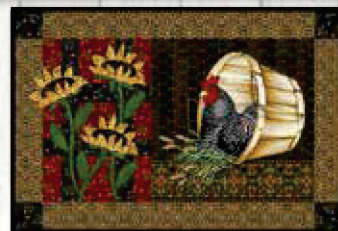
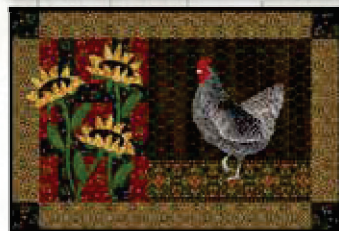
Farmhouse Breakfast

A Free Project Sheet
NOT FOR RESALE

By Jan Mott of Crane Designs



Project Designs by Jan Mott of Crane Designs



facebook

Finished Table Topper Size: 42" x 42"
(106.68 cm x 106.68 cm)

Finished Place Mat Size: 18" x 12"
(45.72 cm x 30.48 cm)


49 West 37th Street, New York, NY 10018
tel: 212-686-5194 fax: 212-532-3525

Toll Free: 800-294-9495

www.henryglassfabrics.net

Please check our website for pattern updates before starting this project.

Skill Level: Advanced Beginner

 Henry Glass & Co., Inc.



FARMHOUSE BREAKFAST

Finished Table Topper Size: 42" x 42"
 (106.68 cm x 106.68 cm)
 Finished Place Mat Size: 18" x 12"
 (45.72 cm x 30.48 cm)

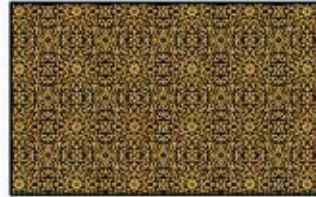
Fabrics in the Chicken Shack Collection



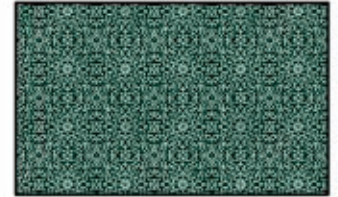
Chicken Allover
White Wash – 3307-11



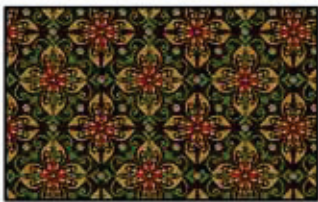
Chicken Wire
Brown – 3308-38



Foulard Tiles
Gold/Black – 3309-39



Foulard Tiles
Teal – 3309-76



Medallion Tiles
Brown – 3310-38



Medallion Tiles
Red – 3310-88



Scenic
Multi – 3311-16



Small Wheat Toss
Red – 3312-88



Small Wheat Toss
Black – 3312-99



Sunflowers
Black – 3313-99



Wheat Texture
Gold – 3314-33



Shiplap
Black – 3315-11



Border Stripe
Black – 3316-99



Panel 24 inch by 44 inch
Black Multi – 3317P-99



Blocks
Black Multi – 3318-99

Select Fabrics from Timeless Linen Basics
and Folio Basics



Timeless Linen Basics
Black – 1027-99



Folio Basics
Christmas Green – 7755-66

FARMHOUSE BREAKFAST

Table Topper Materials

2/3 yard (0.61m)	Blocks - Black Multi (A)	3318-99
3/8 yard (0.34m)	Foulard Tiles - Gold/Black (B)	3309-39
5/8 yard (0.57m)	Small Wheat Toss - Black (C)	3312-99
2/3 yard (0.61m)	Timeless Linen Basics - Black (D)	1027-99*
1/2 yard (0.46m)	Small Wheat Toss - Red (E)	3312-88
3 yards (2.74m)	Medallion Tiles - Brown (Backing)	3310-38

*Includes binding

Table Topper Cutting Instructions

Please note: All strips are cut across the width of fabric (WOF) from selvage to selvage unless otherwise noted.

From the Blocks - Black Multi (A):

- Fussy cut (4) 9 1/2" squares, centered on blocks.

From the Foulard Tiles - Gold/Black (B), cut:

- (3) 3 1/2" x WOF strips. Sub-cut (12) 3 1/2" x 9 1/2" strips.

From the Small Wheat Toss - Black (C), cut:

- (5) 3 1/2" x WOF strips. Sub-cut (57) 3 1/2" squares.

From the Timeless Linen Basics - Black (D), cut:

- (2) 2" x 30 1/2" WOF strips.
- (2) 2" x 27 1/2" WOF strips.
- (5) 2 1/2" x WOF strips for the binding.

From the Small Wheat Toss - Red (E), cut:

- (4) 3 1/2" x WOF strips. Sub-cut (48) 3 1/2" squares.

From the Medallion Tiles - Brown (Backing), cut:

- (2) 50" x WOF strips for the backing. Sew the strips together and trim to make the 50" x 50" back.

Table Topper Block Assembly

Note: The arrows in figures represent the fabric print direction. Pay attention to the fabric and unit orientations when assembling the various components. Use a 1/4" seam allowance with right sides together (RST) unless otherwise noted.

1. Sew together (3) 3 1/2" Fabric C squares and (2) 3 1/2" x 9 1/2" Fabric B strips, end to end and alternating them from left to right, to make Row One (Fig. 1). Repeat to make Row Three and Row Five.

2. Sew together (3) 3 1/2" x 9 1/2" Fabric B strips and (2) 9 1/2" Fabric A squares, alternating them from left to right, to make Row Two (Fig. 1). Repeat to make Row Four.

3. Sew together the (5) pieced Rows, lengthwise and in numerical order from the top to the bottom, to make the 27 1/2" x 27 1/2" Center Block (Fig. 1).

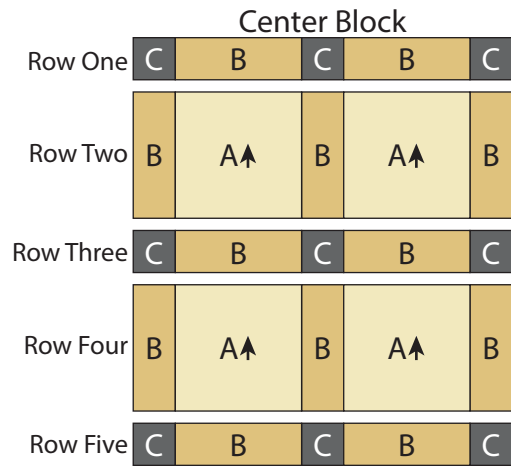


Fig. 1

Side Border

4. Follow Figure 2 and sew together (20) assorted 3 1/2" squares into a 2 x 10 matrix to make (1) Side Border. Repeat to make a second Side Border.

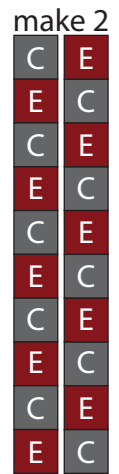


Fig. 2

5. Follow Figure 3 and sew together (28) assorted 3 1/2" squares into a 14 x 2 matrix to make the Top Border. Repeat to make the bottom border.

Top/Bottom Border

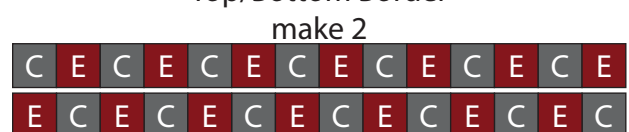


Fig. 3

Table Topper Assembly

(Follow the Table Topper Layout in Figure 4 while assembling the table topper top.)

6. Sew (1) 2" x 27 1/2" Fabric D strip to the top and to the bottom of the Center Block.
7. Sew (1) 2" x 30 1/2" Fabric D strip to each side of the Center Block.
8. Sew (1) Side Border to each side of the Center Block.

9. Sew the Top Border and the Bottom Border to the top and to the bottom of the Center Block to make the Table Topper top.

10. Layer and quilt as desired.

11. Sew the (6) 2 1/2" x WOF Fabric D strips together, end to end with 45-degree seams, to make the binding. Fold this long strip in half lengthwise with wrong sides together and press.

12. Bind as desired.

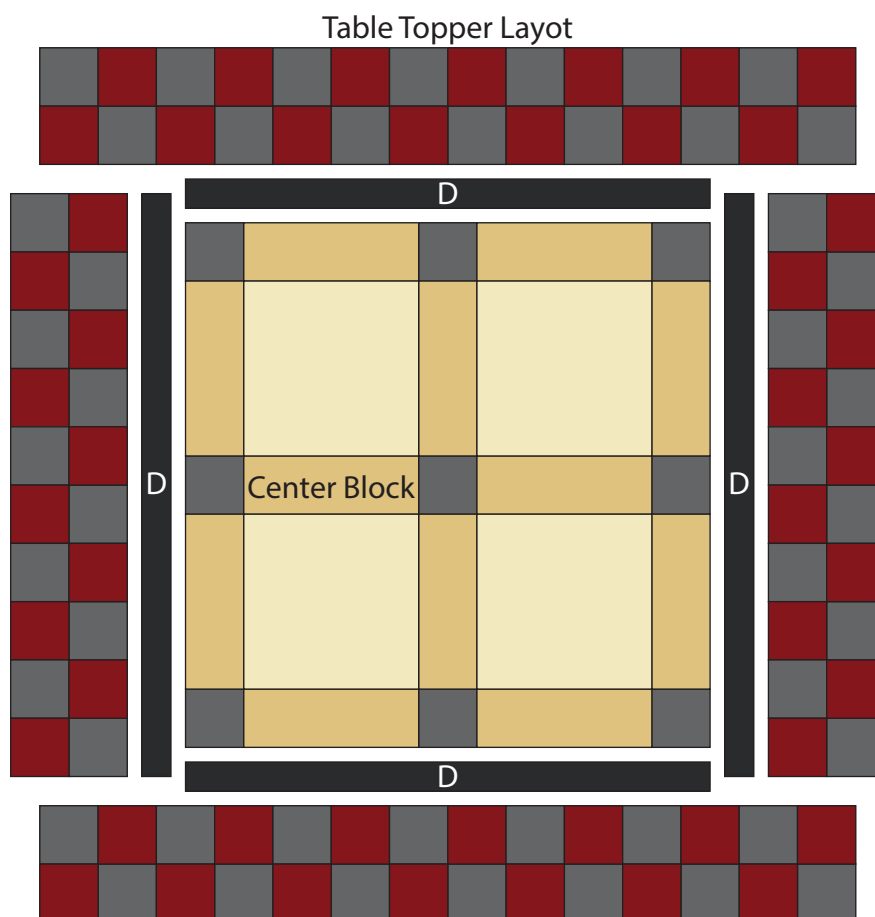


Fig. 4

Place Mat Materials (makes 4)

2/3 yard (0.61m)	Blocks - Black Multi (A)	3318-99
1/3 yard (0.30m)	Small Wheat Toss - Black (B)	3312-99
1/4 yard (0.23m)	Small Wheat Toss - Red (C)	3312-88
1/4 yard (0.23m)	Wheat Texture - Gold (D)	3314-33
1/8 yard (0.11m)	Chicken Wire - Brown (E)	3308-38
1/4 yard (0.23m)	Folio Basics - Christmas Green (F)	7755-66
1/2 yard (0.46m)	Foulard Tiles - Gold/Black (G)	3309-39
5/8 yard (0.57m)	Timeless Linen Basics - Black (H)	1027-99*
1 3/8 yard (1.26m)	Sunflowers - Black (Backs)	3313-99

*Includes binding

Place Mat Cutting Instructions

Please note: All strips are cut across the width of fabric (WOF) from selvage to selvage edge unless otherwise noted.

From the Blocks - Black Multi (A):

- Fussy cut (4) 9 1/2" squares, centered on blocks.

From the Small Wheat Toss - Black (B), cut:

- (1) 2" x WOF strip. Sub-cut (16) 2" squares.
- (2) 1 1/2" x WOF strips. Sub-cut (8) 1 1/2" x 6 1/2" strips and (8) 1 1/2" x 2 1/2" strips.
- (2) 1 1/2" x WOF strips. Sub-cut (16) 1 1/2" x 3" strips.

From the Small Wheat Toss - Red (C), cut:

- (1) 2 1/2" x WOF strip. Sub-cut (8) 2 1/2" x 3" strips and (4) 2 1/2" squares.
- (2) 1 1/2" x WOF strips. Sub-cut (16) 1 1/2" x 3" strips and (8) 1 1/2" x 2 1/2" strips.

From the Wheat Texture - Gold (D), cut:

- See instructions to cut (12) Flower Backs.
- See instructions to cut (12) Flower Fronts.

From the Chicken Wire - Brown (E), cut:

- See instructions to cut (12) Flower Centers.

From the Folio Basics - Christmas Green (F), cut:

- See instructions to cut (4) Stem #1, (4) Stem #2, and (4) Stem #3.
- See instructions to cut (12) Flower Bases.
- See instructions to cut (20) Leaves.

From the Foulard Tiles - Gold/Black (G), cut:

- (2) 2" x WOF strips. Sub-cut (8) 2" x 9 1/2" strips.
- (4) 2" x WOF strips. Sub-cut (8) 2" x 15 1/2" strips.

From the Timeless Linen Basics - Black (H), cut:

- (7) 2 1/2" x WOF strips for the binding.

From the Sunflowers - Black (Backs), cut:

- (2) 22" x WOF strips. Sub-cut (4) 22" x 16" rectangles for the backs.

Place Mat Block Assembly

Note: The arrows in figures represent the fabric print direction. Pay attention to the fabric and unit orientations when assembling the various components. Use a 1/4" seam allowance with right sides together (RST) unless otherwise noted.

13. Sew together (1) 1 1/2" x 3" Fabric C strip, (1) 1 1/2" x 3" Fabric B strip, (1) 2 1/2" x 3" Fabric C strip, (1) 1 1/2" x 3" Fabric B strip and (1) 1 1/2" x 3" Fabric C strip, lengthwise and in that order from left to right, to make Row One (Fig. 5). Repeat to make Row Three.

14. Sew together (1) 1 1/2" x 2 1/2" Fabric C strip, (1) 1 1/2" x 2 1/2" Fabric B strip, (1) 2 1/2" Fabric C square, (1) 1 1/2" x 2 1/2" Fabric B strip and (1) 1 1/2" x 2 1/2" Fabric C strip, in that order from left to right, to make Row Two (Fig. 5).

15. Sew together the (3) pieced rows in numerical order and (2) 1 1/2" x 6 1/2" Fabric B strips, lengthwise and alternating them from the top to the bottom, to make (1) 6 1/2" x 9 1/2" Unit 1 rectangle (Fig. 5).

16. Repeat Steps 13-15 to make (4) Unit 1 rectangles total.

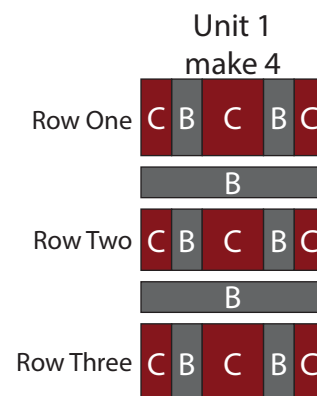


Fig. 5

17. Sew (1) Unit 1 rectangle to the left side of (1) 9 1/2" Fabric A square to make (1) Unit 2 rectangle (Fig. 6). Repeat to make (4) Unit 2 rectangles total.

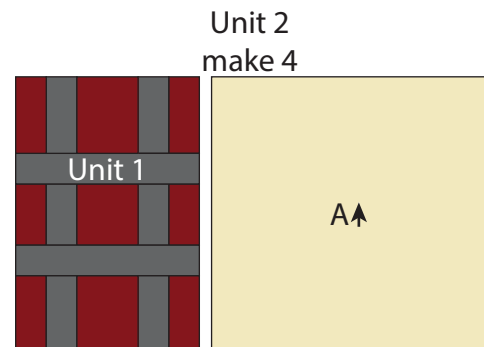


Fig. 6

18. Sew (1) 2" x 9 1/2" Fabric G strip to each side of (1) Unit 2 rectangle (Fig. 7). Sew (1) 2" Fabric B square to each end of (1) 2" x 15 1/2" Fabric G strip. Repeat to make a second strip. Sew the newly sewn strips to the top and to the bottom of the Unit 2 rectangle to make (1) 18 1/2" x 12 1/2" Block One rectangle (Fig. 7). Repeat to make (4) Block One rectangles total.

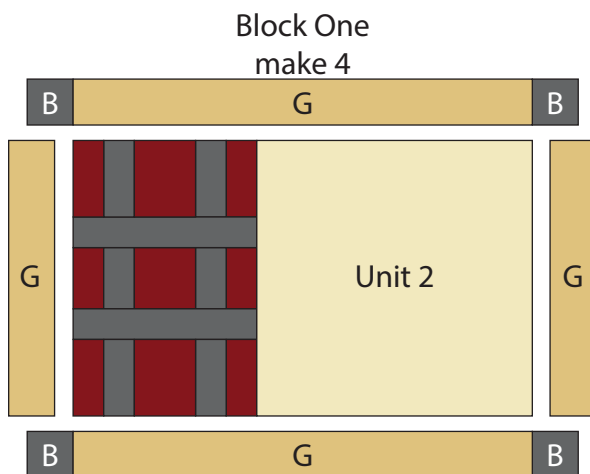


Fig. 7

Place Mat Assembly

(Follow the Place Mat Layout in Figure 8 while assembling the place mat tops.)

19. Following the manufacturer's instructions, trace the listed number of each template onto the paper side of the fusible web. Roughly cut out each template about 1/8" outside the drawn lines.

20. Press each template onto the wrong side of the fabrics as listed on the templates. Cut out each template on the drawn lines.

21. Refer to Figure 8 to arrange and press the assorted sunflower components onto (1) Block One rectangle.

22. Finish the raw edges of each shape with a decorative stitch such as a buttonhole or satin stitch to make (1) Place Mat top (Figure 8).

23. Repeat Steps 21-22 to make (4) Place Mat tops total.

24. Layer and quilt as desired.

25. Sew the (7) 2 1/2" x WOF Fabric H strips together, end to end with 45-degree seams, to make the binding. Fold this long strip in half lengthwise with wrong sides together and press. Cut the strip into (4) equal lengths.

26. Bind as desired.

Place Mat Layout make 4

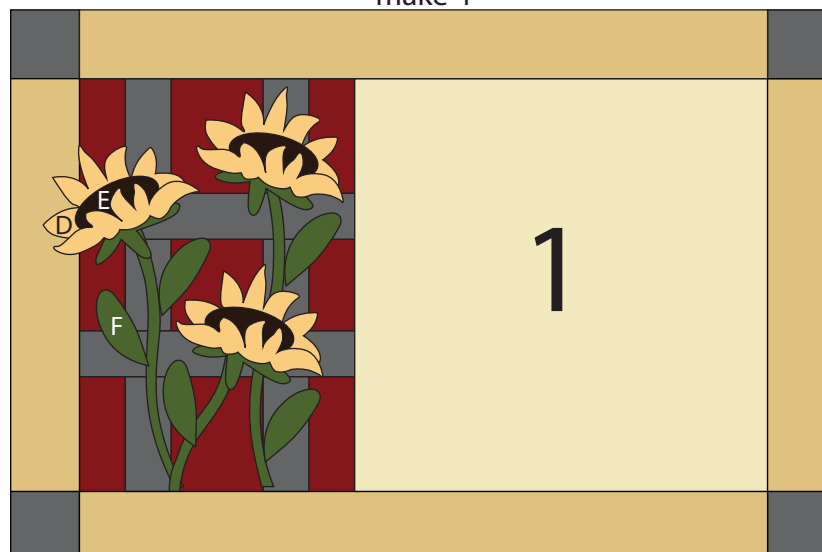
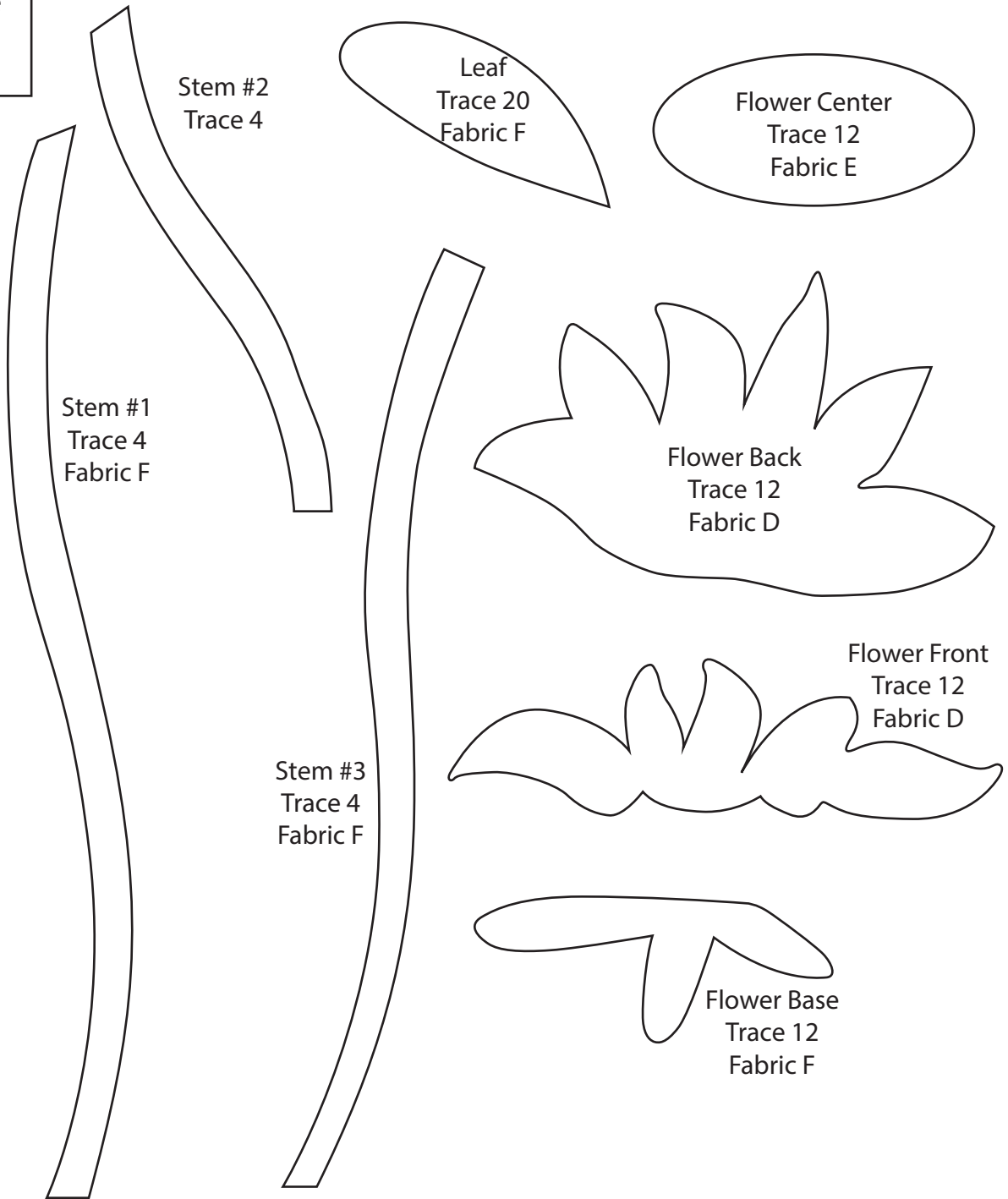
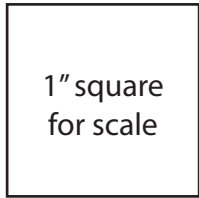


Fig. 8

FARMHOUSE BREAKFAST

100% Templates

Reversed for Fusible Applique



Every effort has been made to ensure that all projects are error free. All the information is presented in good faith, however no warranty can be given nor results guaranteed as we have no control over the execution of instructions. Therefore, we assume no responsibility for the use of this information or damages that may occur as a result. When errors are brought to our attention, we make every effort to correct and post a revision as soon as possible. Please make sure to check www.henryglassfabrics.net for pattern updates prior to starting the project. We also recommend that you test the project prior to cutting for kits. Finally, all free projects are intended to remain free to you and are not for resale.