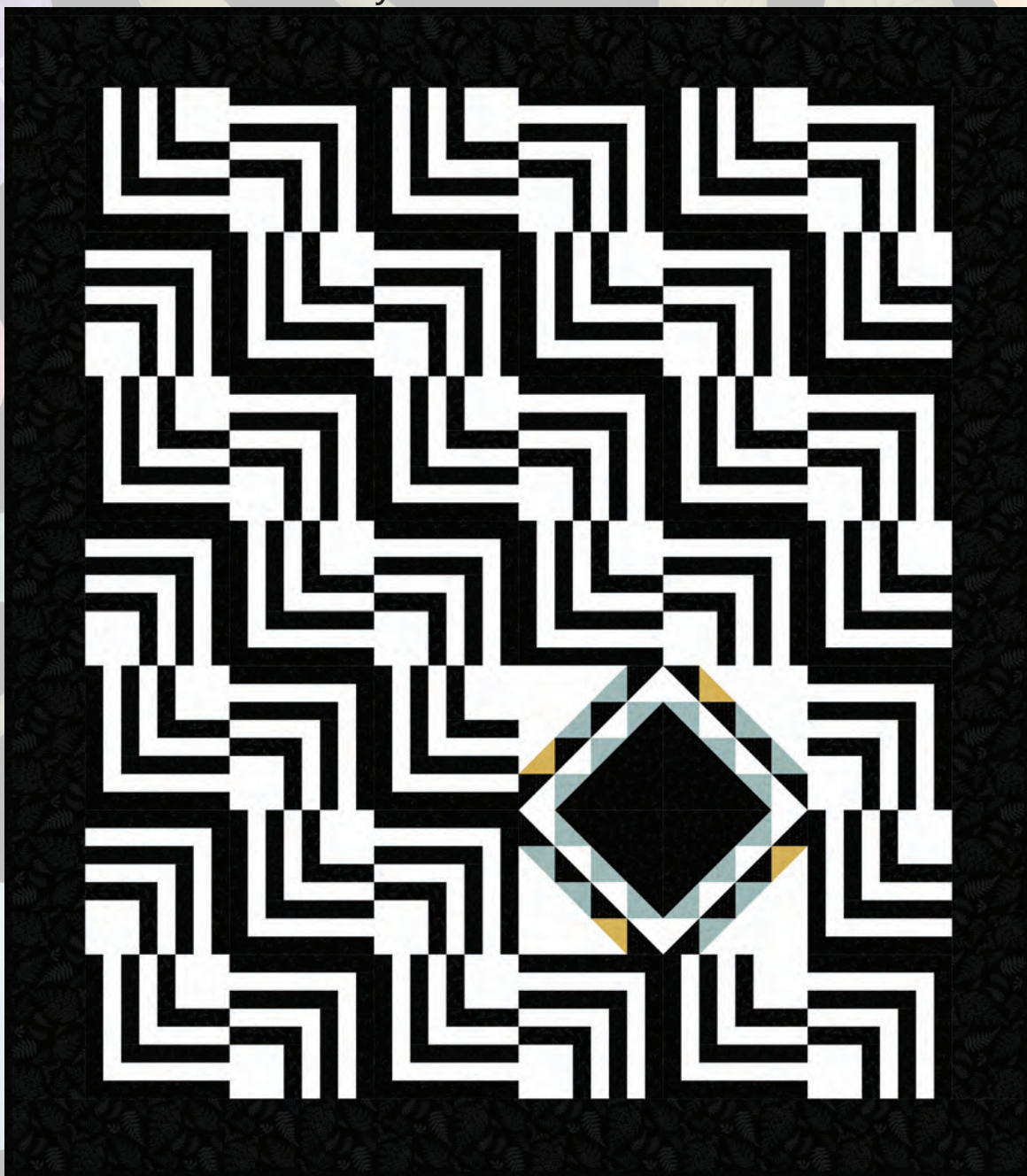


# Back in Black

by Goldi L. Studio



## Geo Surprise Quilt

Designed by Denise Russell of Pieced Brain

Quilt size: 56" x 64"

Skill Level: Beginner

Henry Glass & Co., Inc.

49 West 37th Street ♦ New York, NY 10018 ♦ Tel: 212-686-5194

Fax: 212-532-3525 ♦ Toll Free: 800-294-9495

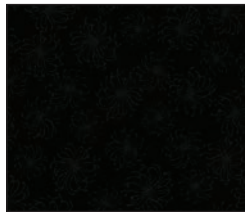
[www.henryglassfabrics.net](http://www.henryglassfabrics.net)



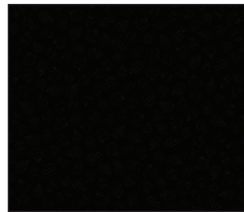
# Back in Black - Fabrics in the Collection



1623-99 Appliqué Shapes  
Multi



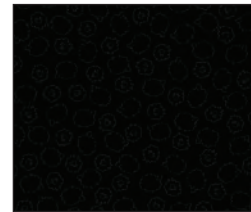
1607-99B  
Chrysanthemum - Black



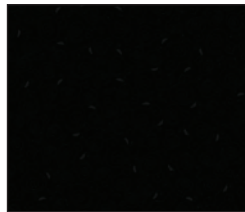
1608-99B  
Cupcakes - Black



1609-99B Bear Deer  
Moose Wolf - Black



1610-99B  
Black Sheep - Black



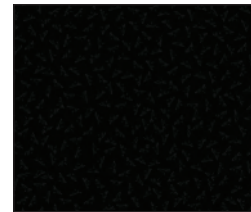
1611-99B  
Cat and Mouse - Black



1612-99B Cowboy  
Accessories - Black



1613-99B  
Diamonds - Black



1614-99B  
Dragonfly - Black



1615-99B  
Fern - Black



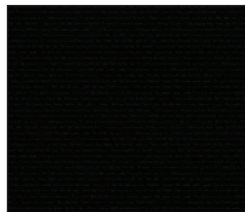
1616-99B  
Flamingo - Black



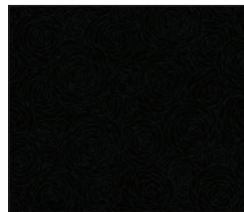
1617-99B  
Snowflakes - Black



1618-99B Stars and  
Moon - Black



1619-99B Word  
Ramble - Black



1620-99B Drawn  
Flowers - Black



1621-99B  
Sunflowers - Black



1622-99B Scrappy  
Background - Black

Selected fabrics from the  
Timeless Linen Basics collection

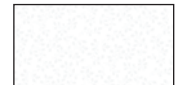


1027-111  
Soft Blue



1027-440  
Yellow

Selected fabric from the  
Folio Basics collection



7755-01W  
White

# Geo Surprise Quilt

## MATERIALS

*Yardages and cutting instructions are based on 42" of usable fabric width.*

1/8 yard 1613-99B Diamonds - Black  
 1/8 yard 1027-111 Timeless Linen Basics - Soft Blue  
 1/8 yard 1027-440 Timeless Linen Basics - Yellow  
 1/4 yard 1616-99B Flamingo - Black  
 1/2 yard 1614-99B Dragonfly - Black  
 7/8 yard 1615-99B Fern - Black  
 1 yard 1609-99B Bear Deer Moose Wolf - Black  
 1 1/4 yards 1610-99B Black Sheep - Black  
 1 5/8 yards 7755-09W Folio Basics - White  
 3 1/2 yards 1611-99B Cat and Mouse - Black for backing  
 64" x 72" piece of batting

## CUTTING

*Note: All strips are cut across the width of the fabric (WOF) from selvage to selvage unless otherwise indicated.*

### From 1613-99B Diamonds – Black, cut:

\* (1) 2 7/8" x WOF strip. Sub-cut (8) 2 7/8" squares.

### From 1027-111 Timeless Linen Basics - Soft Blue, cut:

\* (1) 2 7/8" x WOF strip. Sub-cut (10) 2 7/8" squares; cut once diagonally. (A)

### From 1027-440 Timeless Linen Basics – Yellow, cut:

\* (1) 2 7/8" x WOF strip. Sub-cut (2) 2 7/8" squares; cut once diagonally. (B)

### From 1616-99B Flamingo – Black, cut:

\* (1) 6 7/8" x WOF strip. Sub-cut (2) 6 7/8" squares; cut once diagonally. (C)

### From 1614-99B Dragonfly – Black, cut:

\* (1) 3 1/2" x WOF strip. Sub-cut (28) 1 1/2" x 3 1/2" rectangles.

\* (2) 4 1/2" x WOF strips. Sub-cut:  
 - (38) 1 1/2" x 4 1/2" rectangles.  
 - (10) 1 1/2" x 3 1/2" rectangles, for a total of 38.

### From 1615-99B Fern – Black, cut:

\* (6) 4 1/2" x WOF strips for the border.

### From 1609-99B Bear Deer Moose Wolf – Black, cut:

\* (2) 7 1/2" x WOF strips. Sub-cut (38) 1 1/2" x 7 1/2" rectangles.

\* (2) 8 1/2" x WOF strips. Sub-cut (38) 1 1/2" x 8 1/2" rectangles.

### From 1610-99B Black Sheep – Black, cut:

\* (2) 5 1/2" x WOF strips. Sub-cut (38) 1 1/2" x 5 1/2" rectangles.

\* (2) 6 1/2" x WOF strips. Sub-cut (38) 1 1/2" x 6 1/2" rectangles.

\* (7) 2 1/2" x WOF strips for binding.

### From 7755-09W Folio Basics – White, cut:

\* (2) 1 1/2" x WOF strips. Sub-cut (10) 1 1/2" x 7 1/2" rectangles.

\* (4) 3 1/2" x WOF strips. Sub-cut:

- (38) 3 1/2" squares.

- (8) 2 7/8" squares.

\* (1) 4 1/2" x WOF strip. Sub-cut (28) 1 1/2" x 4 1/2" rectangles.

\* (1) 5 1/2" x WOF strip. Sub-cut (28) 1 1/2" x 5 1/2" rectangles.

\* (2) 6 1/2" x WOF strips. Sub-cut:

- (38) 1 1/2" x 6 1/2" rectangles.

- (10) 1 1/2" x 5 1/2" rectangles, for a total of 38.

\* (1) 6 7/8" x WOF strip. Sub-cut:

- (2) 6 7/8" squares; cut once diagonally. (D)

- (10) 1 1/2" x 4 1/2" rectangles, for a total of 38.

\* (1) 7 1/2" x WOF strip. Sub-cut (28) 1 1/2" x 7 1/2" rectangles, for a total of 38.

### From 1611-99B Cat and Mouse – Black, cut:

\* (2) 64" x WOF panels, pieced horizontally.

## BLOCK ASSEMBLY

### BLOCK 1

*Note: Press every seam toward each new addition, regardless of the color, due to the narrow width of the rectangles to avoid block distortion. No other pressing instructions will be given for this block.*

1. Sew a 1/2" x 3 1/2" 1614-99B Dragonfly – Black rectangle to the left side of a 3 1/2" 7755-09W Folio Basics – White square. Sew a 1 1/2" x 4 1/2" rectangle Dragonfly rectangle to the bottom of the unit (*Figure 1*). Repeat to make 38 units.



Figure 1

# Geo Surprise Quilt

2. Sew a  $1\frac{1}{2}$ " x  $4\frac{1}{2}$ " 7755-09W Folio Basics – White rectangle to the left side of the Step 1 units and a  $1\frac{1}{2}$ " x  $5\frac{1}{2}$ " White rectangle to the bottom of the units (*Figure 2*).



Figure 2

3. Sew a  $1\frac{1}{2}$ " x  $5\frac{1}{2}$ " 1610-99B Black Sheep – Black rectangle to the left side of the units and a  $1\frac{1}{2}$ " x  $6\frac{1}{2}$ " Black Sheep rectangle to the bottom (*Figure 3*).



Figure 3

4. Sew a  $1\frac{1}{2}$ " x  $6\frac{1}{2}$ " 7755-09W Folio Basics – White rectangle to the left side and a  $1\frac{1}{2}$ " x  $7\frac{1}{2}$ " White rectangle to the bottom of the units (*Figure 4*).



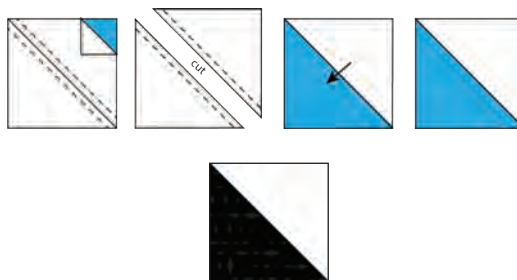
Figure 4

5. Sew a  $1\frac{1}{2}$ " x  $7\frac{1}{2}$ " 1609-99B Bear Deer Moose Wolf – Black rectangle to the left side and a  $1\frac{1}{2}$ " x  $8\frac{1}{2}$ " rectangle to the bottom to complete (38)  $8\frac{1}{2}$ " blocks (*Figure 5*).

Figure 5 – Make (38)  $8\frac{1}{2}$ " blocks.

## BLOCK 2

6. Draw a diagonal line on the wrong side of the  $2\frac{7}{8}$ " Folio Basics – White squares. With right sides together, layer a marked White square atop a  $2\frac{7}{8}$ " 1613-99B Diamonds – Black square. Stitch  $\frac{1}{4}$ " from each side of the diagonal line, cut on the drawn line, press each unit open with the seams toward the darker fabric, and trim dog ears (*Figure 6*). Make (16)  $2\frac{1}{2}$ " half-square triangles.

Figure 6 – Make (16)  $2\frac{1}{2}$ " units.

7. Noting fabric orientation, sew a 1027-111 Timeless Linen Basics - Soft Blue triangle A to the left side of a Step 6 unit (a). Press the seam toward the triangle. Repeat to make 4 units. Sew a triangle A to the right side of 4 Step 6 units – note fabric orientation (b)! Press as before. Sew 2 triangles A to opposite sides of 4 units and press (c). Finally, sew a triangle A to the right side and a 1027-440 Timeless Linen Basics – Yellow triangle B to the left side of the last 4 units (d). Press. Arrange 1 unit of each type as shown, sew them together, and press the seams open (*Figure 7*). Make 4. Press.

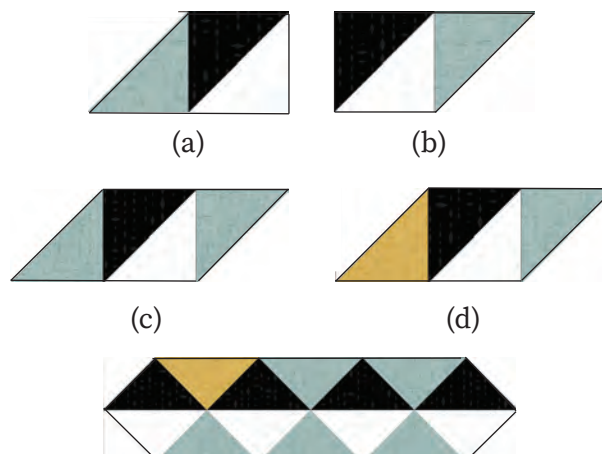


Figure 7 – Make 4 units.

## Geo Surprise Quilt

8. Sew a White triangle D to the top and a 1616-99B Flamingo – Black triangle C to the bottom of the Step 7 units to complete (4) 8½" blocks (*Figure 8*). Press the seams away from the center.



Figure 8 – Make (4) 8½" blocks.

### QUILT ASSEMBLY

9. Referring to the quilt photo and diagram for block placement and orientation, lay out 7 rows of 6 blocks. Join the blocks together in each row. Press the seams in opposite directions from row to row. Matching adjacent seams, sew the rows together in order.
10. For the border, sew the (6) 4½" 1615-99B Fern – Black border strips together end to end using diagonal seams. Measure the vertical length of the quilt top through the center and cut 2 border strips

that length. Sew 1 strip to each side of the quilt top and press the seams away from the center. Measure the width of the quilt top through the center. Cut 2 border strips that length and sew 1 to the top and one to the bottom. Press the seams toward the borders.

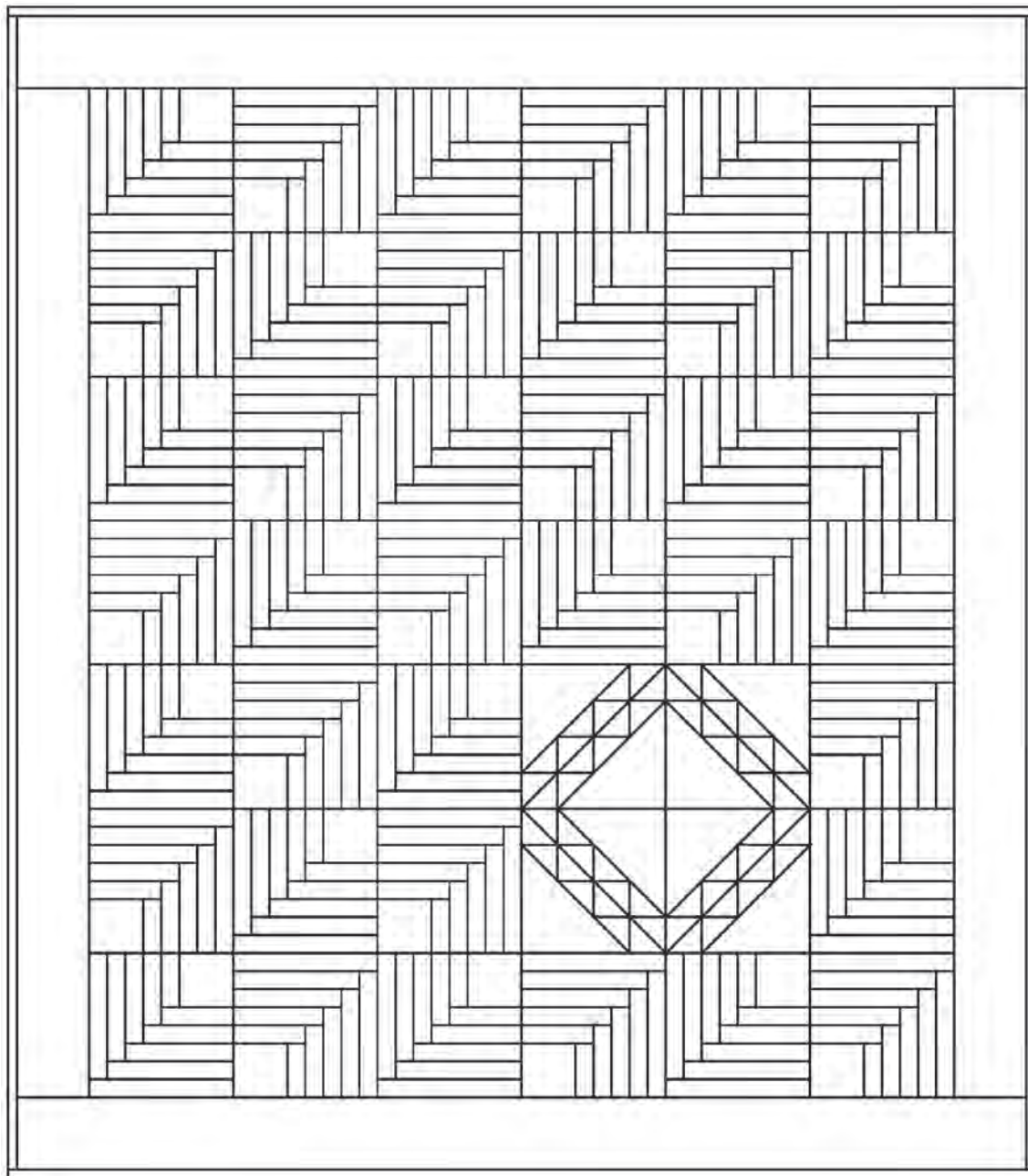
### FINISHING

11. Create a quilt sandwich with the batting between the quilt top and the backing. Pin or baste layers together, mark the quilting design, and quilt by hand or machine. When the quilting is complete, remove pins or basting, and trim batting and backing even with the raw edges of the quilt top.
12. Join the (7) 2½" 1610-99B Black Sheep – Black binding strips together end to end using a diagonal seam to make one long strip. Trim the seams to ¼" and press them open. With wrong sides together, fold the strip in half lengthwise and press. Sew the binding to the edges of the quilt top, mitering corners and overlapping ends. Fold the binding to the back of the quilt and hand stitch in place.

©2024 Henry Glass & Co. Inc.

*Every effort has been made to ensure that all projects are error free. All the information is presented in good faith; however, no warranty can be given nor results guaranteed as we have no control over the execution of instructions. Therefore, we assume no responsibility for the use of this information or damages that may occur as a result. When errors are brought to our attention, we make every effort to correct and post a revision as soon as possible. Please make sure to check [www.henryglassfabrics.net](http://www.henryglassfabrics.net) for pattern updates prior to starting the project. We also recommend that you test the project prior to cutting for kits. Finally, all free projects are intended to remain free to you and are not for resale.*

# Geo Surprise Quilt



Quilt Diagram