

Philomena

by Michelle Yeo



Quilt size: 88" x 88" (2.24m x 2.24m)

Skill Level: Intermediate

Philomena's Star Quilt (Light Teal)

Designed by Michelle Yeo
www.michelleyeoquiltdesigns.com

 **Henry Glass & Co., Inc.**



3474-17*
Ombre Diagonal
Teal/Blue



3475-77
Tossed Calico
Prussian Blue



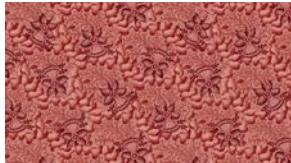
3475-88
Tossed Calico
Red



3476-44
Coral Fan
Cream

Philomena's Star Quilt - Light Teal Ordering Guide				
SKU	Yards	Meters	6 Kits	12 Kits
3474-17	5/8 yd	0.57m	1 bolt	1 bolt
3475-77	3/4 yd	0.69m	1 bolt	1 bolt
3475-88	5/8 yd	0.57m	1 bolt	1 bolt
3476-44	5/8 yd	0.57m	1 bolt	1 bolt
3476-80	1 yd	0.91m	1 bolt	1 bolt
3477-33	1/2 yd	0.46m	1 bolt	1 bolt
3477-76	1/2 yd	0.46m	1 bolt	1 bolt
3478-82	3 1/3 yds	3.04m	2 bolts	3 bolts
3479-38	3/4 yd	0.69m	1 bolt	1 bolt
3479-76*	1 1/8 yds	1.03m	1 bolt	1 bolt
3480-73	1/4 yd	0.23m	1 bolt	1 bolt
3480-87	1/2 yd	0.46m	1 bolt	1 bolt
3482-43	1/2 yd	0.46m	1 bolt	1 bolt
3483-74	2 2/3 yds	2.44m	2 bolts	3 bolts
3485-17	5/8 yd	0.57m	1 bolt	1 bolt
3485-44	5/8 yd	0.57m	1 bolt	1 bolt
3485-77	3 2/3 yds	3.35m	2 bolts	4 bolts
3484-17	2 yds	1.83m	1 bolt	2 bolts
3485-17	4 1/3 yds	3.96m	2 bolts	4 bolts
Backing Fabric Option				
3476-44	8 yds	7.32m	4 bolts	7 bolts

* Indicates binding fabric.
FO = 18" x 22" (0.45m x 0.55m)
All fabric quantities are based on 15yd bolts unless otherwise indicated.



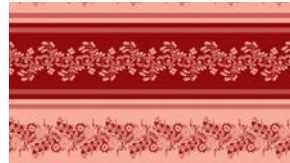
3476-80
Coral Fan
Light Red



3477-33
Medallion and Lilies
Caramel



3477-76
Medallion and Lilies
Light Turquoise



3478-82
Serpentine Stripe
Red/Pink



3479-38
Regal Swirls
Brown



3479-76
Regal Swirls
Dark Turquoise



3480-73
Quirky Swirls
Prussian Blue/Sienna



3480-87
Quirky Swirls
Red/Teal



3482-43
Toile
Cream/Caramel Multi



3483-74
Large Border Stripe
Blue Multi



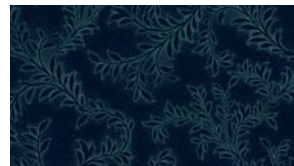
3484-17
Baskets and Birds
Light Teal



3485-17
Background Vines
Light Teal



3485-44
Background Vines
Cream



3485-77
Background Vines
Prussian Blue