

Catsup

by City Art Studio



Quilt size: 56" x 74" (1.42m x 1.88m)

Skill Level: Advanced Beginner

Stellar View Quilt

Designed by Leland Turner and Susan Ziegler

www.quiltintia.com

 **Henry Glass & Co., Inc.**

Stellar View Quilt Ordering Guide

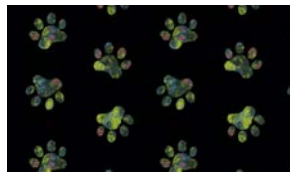
SKU	Yards	Meters	6 Kits	12 Kits
 1927-62	1 yd	0.91m	1 bolt	1 bolt
 1929-61	1 3/4 yds	1.60m	1 bolt	2 bolts
 1930-96*	2 yds	1.83m	1 bolt	22 bolts
 1932-19	1 yd	0.91m	1 bolt	1 bolt
 1935P-19	2/3 yds	0.61m	1 bolt	1 bolt
Backing Fabric Option				
1928-19	4 yds	3.66m	2 bolts	4 bolts
<p>* Indicates binding fabric. FQ = 18" x 22" (0.45m x 0.55m) All fabric quantities are based on 15yd bolts unless otherwise indicated.</p>				



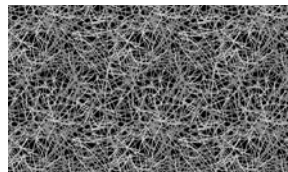
1927-62
Packed Flowers
Green/Multi



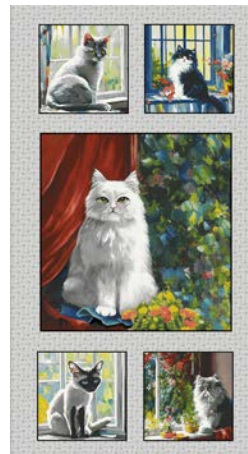
1929-61
Cheater's Quilt
Green/Multi



1930-96*
Paw Prints
Black/Multi



1932-19
Cat Hair
Black/Gray



1935P-19
Panel
Gray/Multi

**** The yardage requirements include additional fabric required to fussy cut
1929-61 for the inner border ****