

# Simply Charming

by Janet Nesbitt



Quilt size: 48" x 48" (1.21m x 1.21m)

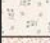









Skill Level: Advanced Beginner

## Shoofly Quilt

Designed by Janet Nesbitt  
[www.onesisterdesigns.com](http://www.onesisterdesigns.com)

 **Henry Glass & Co., Inc.**

## Shoofly Quilt Ordering Guide

SKU	Yards	Meters	6 Kits	12 Kits
 3498-17	1 1/4 yds	1.14m	1 bolt	2 bolts
 3498-22	1/4 yds	0.23m	1 bolt	1 bolt
 3499-17	1/4 yds	0.23m	1 bolt	1 bolt
 3499-22	1/4 yds	0.23m	1 bolt	1 bolt
 3500-36	1/4 yds	0.23m	1 bolt	1 bolt
 3500-47	1/4 yds	0.23m	1 bolt	1 bolt
 3501-32	1/4 yds	0.23m	1 bolt	1 bolt
 3501-37	1/4 yds	0.23m	1 bolt	1 bolt
 3502-47	1/4 yds	0.23m	1 bolt	1 bolt
 3502-38	1/4 yds	0.23m	1 bolt	1 bolt
 3503-22*	1 yd	0.91m	1 bolt	1 bolt
 3503-77	1/4 yds	0.23m	1 bolt	1 bolt
 3504-17	1/4 yds	0.23m	1 bolt	1 bolt
 3504-44	1/4 yds	0.23m	1 bolt	1 bolt
 3505-33	1/2 yds	0.46m	1 bolt	1 bolt
 3505-66	1/4 yds	0.23m	1 bolt	1 bolt
 3506-88	1/4 yds	0.23m	1 bolt	1 bolt
 3506-66	1/4 yds	0.23m	1 bolt	1 bolt
 3507-22	1/2 yds	0.46m	1 bolt	1 bolt
 3507-76	1/4 yds	0.23m	1 bolt	1 bolt
 3508-77	1/4 yds	0.23m	1 bolt	1 bolt
 3508-38	1/4 yds	0.23m	1 bolt	1 bolt
 3509-34	1/4 yds	0.23m	1 bolt	1 bolt
 3509-66	1/4 yds	0.23m	1 bolt	1 bolt
 3510-74	1/4 yds	0.23m	1 bolt	1 bolt
 3510-84	1/4 yds	0.23m	1 bolt	1 bolt
 3511-38	1/4 yds	0.23m	1 bolt	1 bolt
 3511-37	1/4 yds	0.23m	1 bolt	1 bolt
<b>Backing Fabric Option</b>				
3498-22	3 yds	2.74m	2 bolts	3 bolts
* Indicates binding fabric. FO = 18" x 22" (0.45m x 0.55m) All fabric quantities are based on 15yd bolts unless otherwise indicated.				



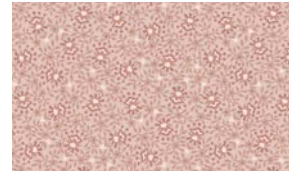
3498-17  
Mixed Media  
Blue



3498-22  
Mixed Media  
Pink



3499-17  
Busy Flower Toss  
Blue



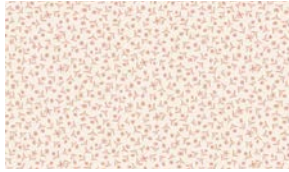
3499-22  
Busy Flower Toss  
Pink



3500-36  
Flower Bouquets  
Pink



3500-47  
Flower Bouquets  
Cream Blue



3501-32  
Tiny Flowers  
Cream Pink



3501-37  
Tiny Flowers  
Taupe Blue



3502-47  
Trailing Berry Vines  
Cream Blue



3502-38  
Trailing Berry Vines  
Brown



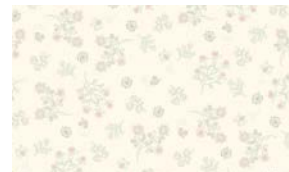
3503-22\*  
Textured Flower Toss  
Pink



3503-77  
Textured Flower Toss  
Blue



3504-17  
Clover  
Blue



3504-44  
Clover  
Cream



3505-33  
Harvest Flowers  
Yellow



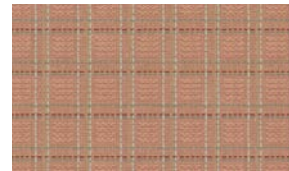
3505-66  
Harvest Flowers  
Green



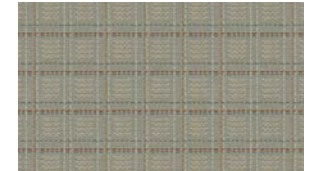
3506-88  
Textured Dots  
Red



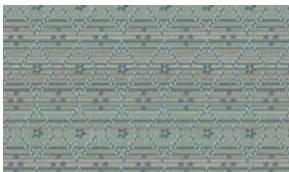
3506-66  
Textured Dots  
Green



3507-22  
Stitched Plaid  
Pink



3507-76  
Stitched Plaid  
Blue Green



3508-77  
Diamond Plaid  
Blue



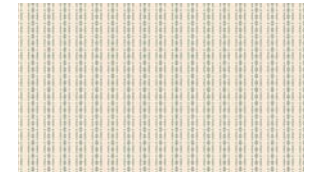
3508-38  
Diamond Plaid  
Brown



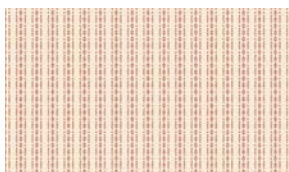
3509-34  
Flower Plaid  
Yellow Tan



3509-66  
Flower Plaid  
Green



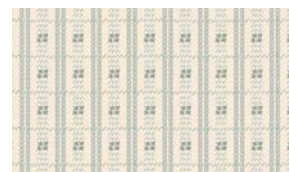
3510-74  
Ticking Stripe  
Blue Cream



3510-84  
Ticking Stripe  
Red Cream



3511-38  
Star Zig Zag Plaid  
Brown



3511-37  
Star Zig Zag Plaid  
Cream Blue