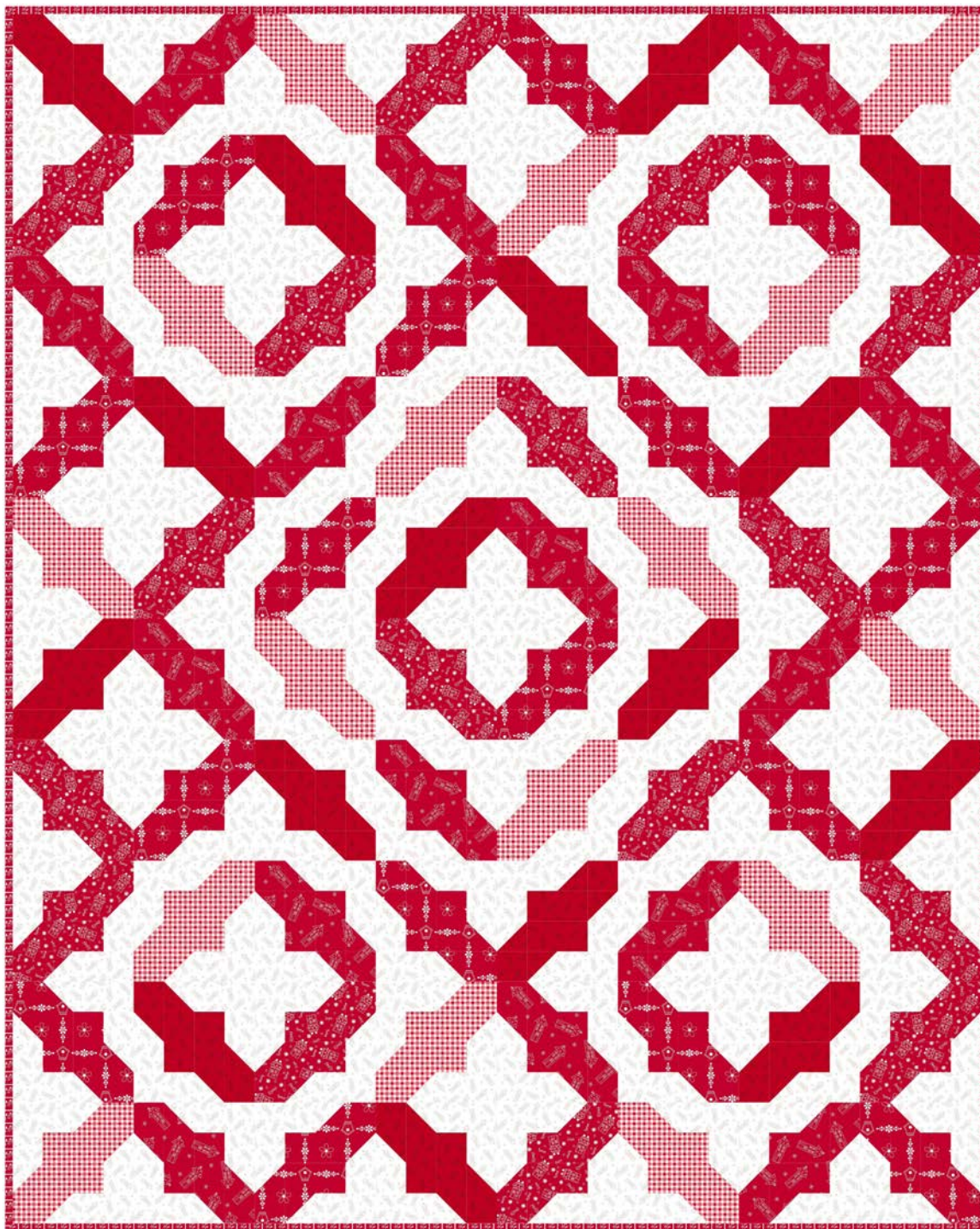


Redberry Lane

by Gail Green



Quilt size: 64" x 80" (1.63m x 2.03m)







Skill Level: Advanced Beginner

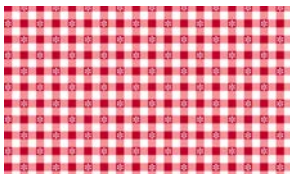
Redberry Dance Quilt

Designed by Tiffany Hayes of Needle in a Hayes Stack

www.NeedleinaHayesStack.biz

Redberry Dance Quilt Ordering Guide

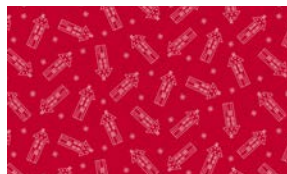
SKU	Yards	Meters	6 Kits	12 Kits
 3488-80	3/4 yds	0.69m	1 bolt	1 bolt
 3491-80	3/4 yds	0.69m	1 bolt	1 bolt
 3492-80	3/4 yds	0.69m	1 bolt	1 bolt
 3493-80*	5/8 yds	0.57m	1 bolt	1 bolt
 3494-80	3/4 yds	0.69m	1 bolt	1 bolt
 3497-18	2 3/4 yds	2.51m	2 bolts	3 bolts
 3497-88	3/4 yds	0.69m	1 bolt	1 bolt
Backing Fabric Option				
3494-18	5 yds	4.57m	3 bolts	5 bolts
<p>* Indicates binding fabric. FO = 18" x 22" (0.45m x 0.55m) All fabric quantities are based on 15yd bolts unless otherwise indicated.</p>				



3488-80
Daisy Check
Red



3491-80
BirdHouse Trellis
Red



3492-80
Hash Tag House Toss
Red



3493-80
Viney Stripe
Red



3494-80
House of Love Toss
Red



3497-18
Tiny Houses
White



3497-88*
Tiny Houses
Red