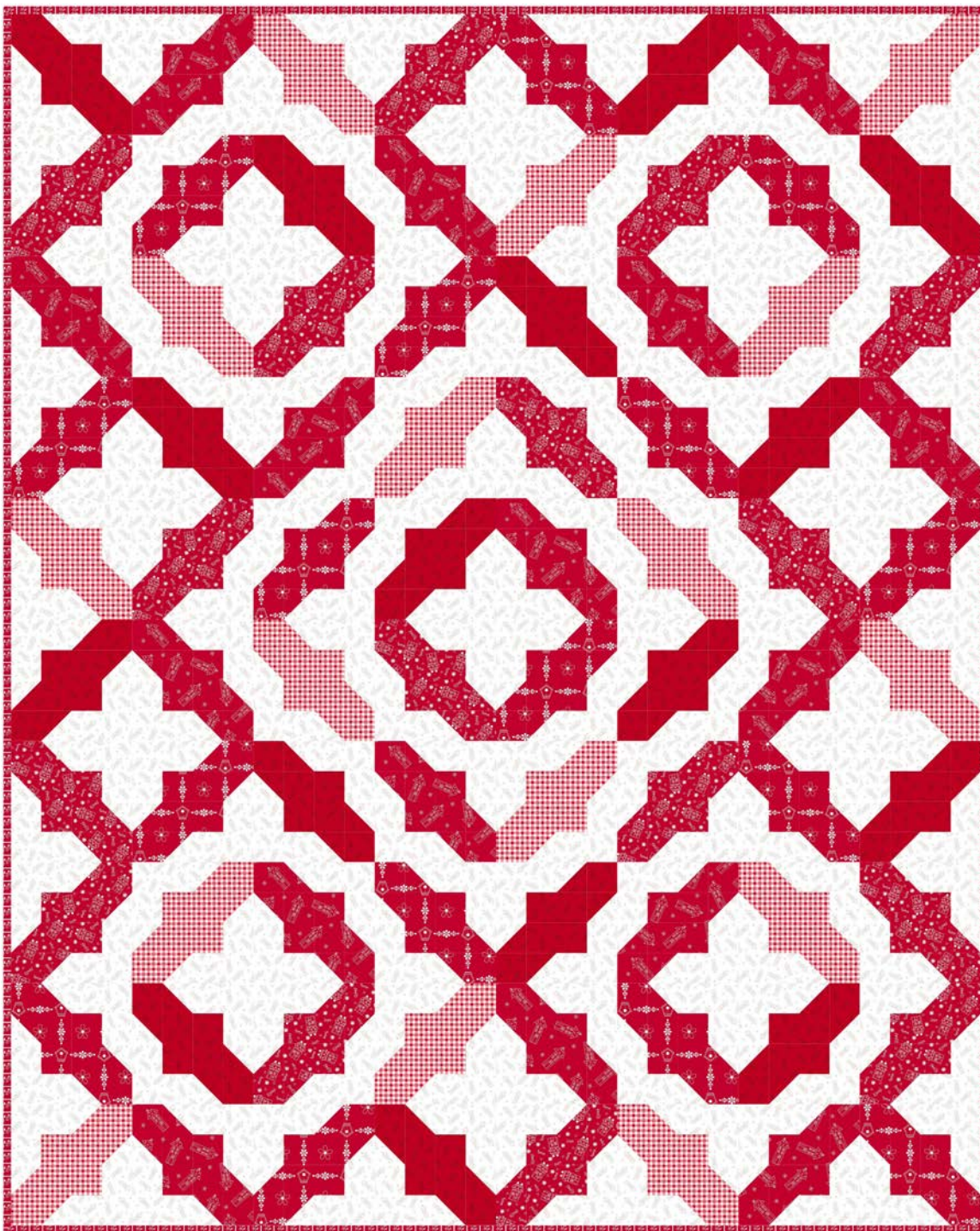


# Redberry Lane

by Gail Pail



Quilt size: 64" x 80" (1.63m x 2.03m)






Skill Level: Advanced Beginner

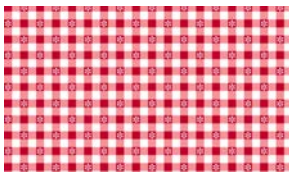
## Redberry Dance Quilt

Designed by Tiffany Hayes of Needle in a Hayes Stack

[www.NeedleinaHayesStack.biz](http://www.NeedleinaHayesStack.biz)

## Redberry Dance Quilt Ordering Guide

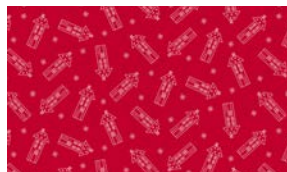
SKU	Yards	Meters	6 Kits	12 Kits
 3488-80	3/4 yds	0.69m	1 bolt	1 bolt
 3491-80	3/4 yds	0.69m	1 bolt	1 bolt
 3492-80	3/4 yds	0.69m	1 bolt	1 bolt
 3493-80*	5/8 yds	0.57m	1 bolt	1 bolt
 3494-80	3/4 yds	0.69m	1 bolt	1 bolt
 3497-18	2 3/4 yds	2.51m	2 bolts	3 bolts
 3497-88	3/4 yds	0.69m	1 bolt	1 bolt
<b>Backing Fabric Option</b>				
3494-18	5 yds	4.57m	3 bolts	5 bolts
<p>* Indicates binding fabric.            FO = 18" x 22" (0.45m x 0.55m)            All fabric quantities are based on 15yd bolts unless otherwise indicated.</p>				



3488-80  
Daisy Check  
Red



3491-80  
BirdHouse Trellis  
Red



3492-80  
Hash Tag House Toss  
Red



3493-80  
Viney Stripe  
Red



3494-80  
House of Love Toss  
Red



3497-18  
Tiny Houses  
White



3497-88\*  
Tiny Houses  
Red