

Redberry Lane

by Gail Pail



Quilt size: 37" x 51" (0.79m x 1.29m)

Skill Level: Advanced Beginner

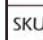















Home Sweet Home Quilt

Designed by Gail Pan

www.henryglassfabrics.net

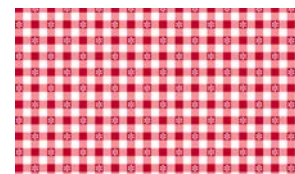
 **Henry Glass & Co., Inc.**

Home Sweet Home Quilt Ordering Guide

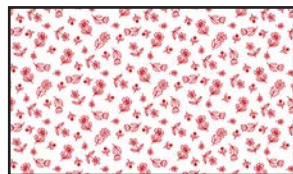
SKU	Yards	Meters	6 Kits	12 Kits
 3488-43	1/8 yds	0.11m	1 bolt	1 bolt
 3488-80	3/4 yds	0.69m	1 bolt	1 bolt
 3489-18	1/4 yds	0.23m	1 bolt	1 bolt
 3489-80	1/4 yds	0.23m	1 bolt	1 bolt
 3490-18	1/4 yds	0.23m	1 bolt	1 bolt
 3490-80	1/4 yds	0.23m	1 bolt	1 bolt
 3491-18	1/4 yds	0.23m	1 bolt	1 bolt
 3491-80	1/4 yds	0.23m	1 bolt	1 bolt
 3492-18	1/4 yds	0.23m	1 bolt	1 bolt
 3492-80	1/4 yds	0.23m	1 bolt	1 bolt
 3493-18	1/4 yds	0.23m	1 bolt	1 bolt
 3493-80	1/4 yds	0.23m	1 bolt	1 bolt
 3494-18	1/4 yds	0.23m	1 bolt	1 bolt
 3494-80	1/4 yds	0.23m	1 bolt	1 bolt
 3495P-80	2/3 yds	0.61m	1 bolt	1 bolt
 3497-88*	5/8 yds	0.57m	1 bolt	1 bolt
Backing Fabric Option				
3497-18	2 1/2 yds	2.29m	2 bolts	3 bolts
* Indicates binding fabric. FQ = 18" x 22" (0.45m x 0.55m) All fabric quantities are based on 15yd bolts unless otherwise indicated.				



3488-43
Daisy Check
Tan



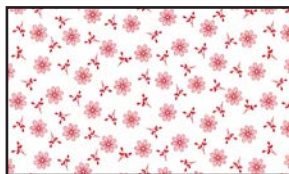
3488-80
Daisy Check
Red



3489-18
Mini Calico
White



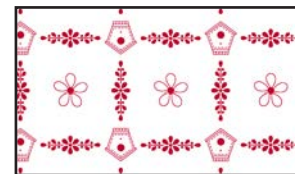
3489-80
Mini Calico
Red



3490-18
Daisy Sprig
White



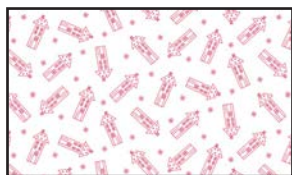
3490-80
Daisy Sprig
Red



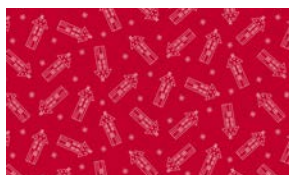
3491-18
BirdHouse Trellis
White



3491-80
BirdHouse Trellis
Red



3492-18
Hash Tag House Toss
White



3492-80
Hash Tag House Toss
Red



3493-18
Viney Stripe
White



3495P-80
Redberry Lane Panel
Red



3493-80
Viney Stripe
Red



3494-18
House of Love Toss
White



3494-80
House of Love Toss
Red



3497-88*
Tiny Houses
Red

The unused strips from the Panel are used in the Garden Tote project.