

# Blizzard Fun

by Jan Shade Beach



Quilt size: 63 1/2" x 75 1/2" (1.61m x 1.92m)

Skill Level: Intermediate

## Winter Wonderland Quilt

Designed by Matthew Pridemore of The Whimsical Workshop

[www.henryglassfabrics.net](http://www.henryglassfabrics.net)

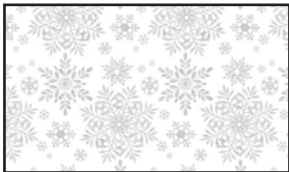
## Winter Wonderland Quilt Ordering Guide

SKU	Yards	Meters	6 Kits	12 Kits
 2051-89	2/3 yds	0.61m	1 bolt	1 bolt
 2053-09	1 1/3 yds	1.22m	1 bolt	2 bolts
 2053-88	5/8 yds	0.57m	1 bolt	1 bolt
 2054-90	1/2 yds	0.46m	1 bolt	1 bolt
 2055-08	1/2 yds	0.46m	1 bolt	1 bolt
 2057-89*	1 1/8 yds	1.03m	1 bolt	1 bolt
 2058-08	5/8 yds	0.57m	1 bolt	1 bolt
 2059-88	1/4 yds	0.23m	1 bolt	1 bolt
 2060-89	2 1/3 yds	2.13m	1 bolt	2 bolts

### Backing Fabric Option

2052-88	4 3/4 yds	4.34m	2 bolts	4 bolts
---------	-----------	-------	---------	---------

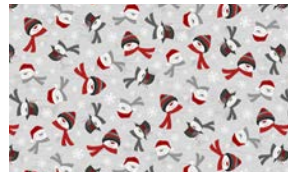
\* Indicates binding fabric.  
FO = 18" x 22" (0.45m x 0.55m)  
All fabric quantities are based on 15yd bolts unless otherwise indicated.



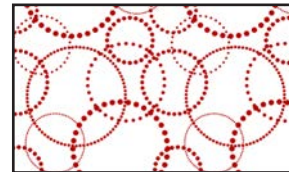
2053-09  
Snowflakes  
White/Gray



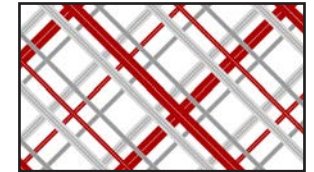
2053-88  
Snowflakes  
Red



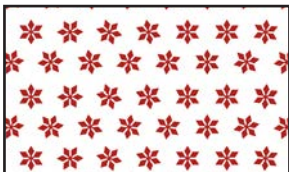
2054-90  
Snowmen Heads  
Light Gray



2055-08  
Dotted Circles  
White/Red



2057-89\*  
Bias Plaid  
Red/Gray



2058-08  
Graphic Snowflake  
White/Red



2059-88  
Tossed Snowmen  
Red



2060-89  
Novelty Snowman Stripe  
Red/Gray



2051-89  
24 Inch Block repeat  
Red/Gray