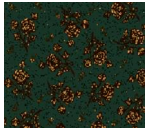


SIMPLE WHATNOTS CLUB ~ ANNUAL COLLECTION 7

Helping Hands Ordering Summary for One Complete Pattern Collection

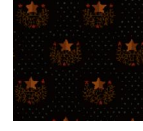
Ordering summary includes binding for each project; backing requirements are not included. Yardages have been rounded up to the next 1/8 yard increment for cutting needs. Please refer to the project directions when cutting and preparing kits.



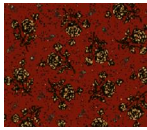
6874-70 1/4 yd



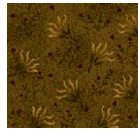
6879-33 1 yd



6883-99 1 1/8 yds



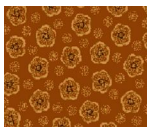
6874-88 1/2 yd



6879-66 3/4 yd



6884Y-33 2/3 yd



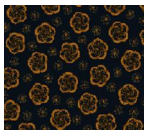
6875-33 3/4 yd



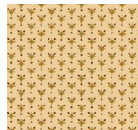
6880-11 1/4 yd



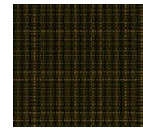
6885Y-77 2/3 yd



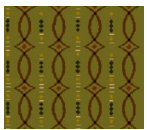
6875-77 1 1/8 yds



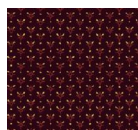
6880-44 3/4 yd



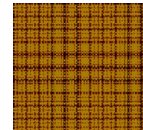
6886Y-66 7/8 yd



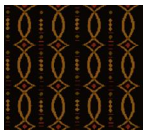
6876-66 1/2 yd



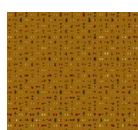
6880-55 1/4 yd



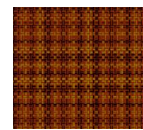
6887Y-30 1 yd



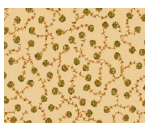
6876-99 5/8 yd



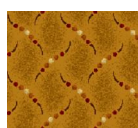
6881-40 3/4 yd



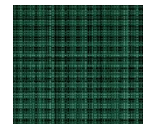
6888Y-33 1 1/8 yds



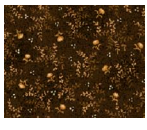
6877-44 1 3/4 yds



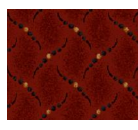
6882-40 3/4 yd



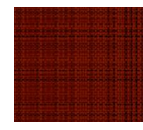
6889Y-11 7/8 yd



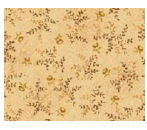
6878-33 2/3 yd



6882-88 1 yd



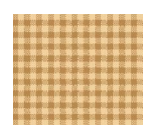
6890Y-88 1 7/8 yds



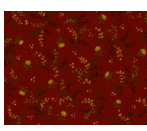
6878-44 1 yd



6883-30 3/4 yd



6891Y-44 1 yd



6878-88 1/2 yd



6883-66 3/4 yd