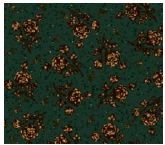


~ PRIDE AND JOY ~

Six-Part Stitch-Along Program Featuring
Kim Diehl's *Helping Hands* Collection

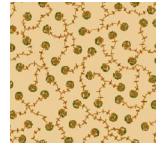
For ordering purposes, yardages for one complete quilt (including binding) are itemized below and have been rounded up to the nearest 1/8 yard increment for cutting needs. Backing requirement is not included.

To simplify the process of pricing of this club for your customers, actual pre-cuts and yardage amounts used per quilt are itemized below each yardage total. Pre-cut sizes are as follows:
Fat Quarters ó 18ö x 21ö Fat 8ths ó 9ö x 21ö Chubby 16ths ó 9ö x 10 1/2ö
Charm Squares ó 5ö x 5ö



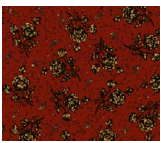
6874-70 ♦ 1/2 yard

♦ 1 fat 8th; 3 chubby 16ths; 2 charm squares



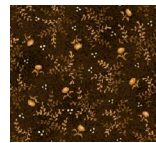
6877-44 ♦ 1 1/4 yards

♦ 3 fat quarters; 3 fat 8ths



6874-88 ♦ 2/3 yard

♦ 2 fat 8ths; 2 chubby 16ths; 2 charm squares



6878-33 ♦ 3/4 yard

1 fat quarter; 1 fat 8th; 3 chubby 16ths; 1 charm square



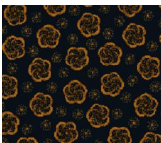
6875-33 ♦ 1/2 yard

1 fat 8th; 3 chubby 16ths; 2 charm squares



6878-44 ♦ 1 1/4 yards

♦ 3 fat quarters; 3 fat 8ths



6875-77 ♦ 1/2 yard

1 fat 8th; 3 chubby 16ths; 2 charm squares



6878-88 ♦ 1/2 yard

♦ 2 fat 8ths; 2 chubby 16ths; 2 charm squares



6876-66 ♦ 1/2 yard

♦ 1 fat 8th; 3 chubby 16ths; 2 charm squares



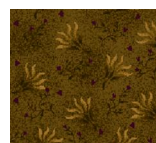
6879-33 ♦ 1/2 yard

♦ 1 fat 8th; 3 chubby 16ths; 2 charm squares



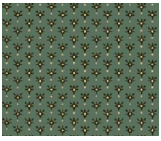
6876-99 ♦ 1 1/2 yards

♦ 2 cuts, 1/2 yard each; 1 fat quarter



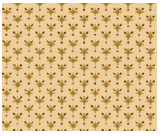
6879-66 ♦ 1/2 yard

♦ 1 fat 8th; 3 chubby 16ths; 2 charm squares



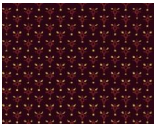
6880-11 ♦ 1/2 yard

♦ 1 fat 8th; 3 chubby 16ths; 2 charm squares



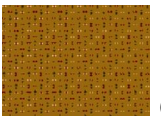
6880-44 ♦ 1 1/4 yards

♦ 3 fat quarters; 3 fat 8ths



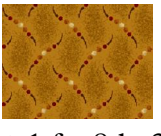
6880-55 ♦ 1/2 yard

♦ 1 fat 8th; 3 chubby 16ths; 2 charm squares



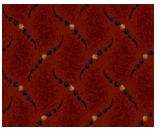
6881-40 ♦ 1/2 yard

♦ 1 fat 8th; 3 chubby 16ths; 2 charm squares



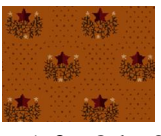
6882-40 ♦ 1/2 yard

♦ 1 fat 8th; 3 chubby 16ths; 2 charm squares



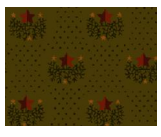
6882-88 ♦ 1/2 yard

♦ 2 fat 8ths; 2 chubby 16ths; 2 charm squares



6883-30 ♦ 1/2 yard

♦ 1 fat 8th; 3 chubby 16ths; 2 charm squares



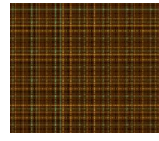
6883-66 ♦ 1/2 yard

♦ 1 fat 8th; 3 chubby 16ths; 2 charm squares



6883-99 ♦ 1 3/4 yards

♦ 1 cut, 1 1/2 yards; 1 fat 8th



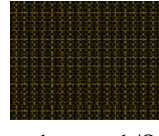
6884Y-33 ♦ 3/8 yard

♦ 1 cut, 1/8 yard (not a fat 8th); 2 chubby 16ths



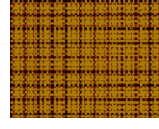
6885Y-77 ♦ 3/8 yard

♦ 1 cut, 1/8 yard (not a fat 8th); 2 chubby 16ths



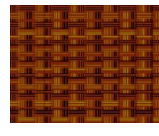
6886Y-66 ♦ 3/8 yard

♦ 1 cut, 1/8 yard (not a fat 8th); 2 chubby 16ths



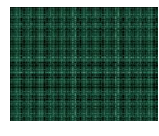
6887Y-30 ♦ 3/8 yard

♦ 1 cut, 1/8 yard (not a fat 8th); 2 chubby 16ths



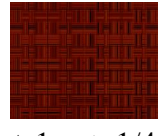
6888Y-33 ♦ 3/8 yard

♦ 1 cut, 1/8 yard (not a fat 8th); 2 chubby 16ths



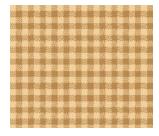
6889Y-11 3/8 yard

♦ 1 cut, 1/8 yard (not a fat 8th); 2 chubby 16ths



6890Y-88 ♦ 3/4 yard

♦ 1 cut, 1/4 yard (not a FQ); 2 fat 8ths;
1 chubby 16th



6891Y-44 ♦ 1 1/4 yards

♦ 3 fat quarters; 3 fat 8ths

