

SIMPLE WHATNOTS CLUB ~ ANNUAL COLLECTION 6

Katie's Cupboard Ordering Summary for One Complete Pattern Collection

Ordering summary includes binding for each project; backing requirements are not included. Yardages have been rounded up to the next 1/8 yard increment for cutting needs. Please refer to the project directions when cutting and preparing kits.

For calculating purposes, it's assumed that only one version of Autumn Tapestry will be made by any given club participant; the yardage amounts provided will enable either version to be made.



6670-33 ♦ 1 yd



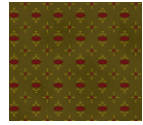
6673-30 ♦ 1/2 yd



6676-40 ♦ 2 1/8 yds



6670-88 ♦ 3/4 yd



6673-66 ♦ 1/2 yd



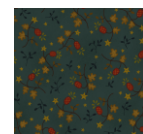
6676-44 ♦ 1/2 yd



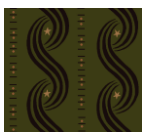
6670-99 ♦ 1/2 yd



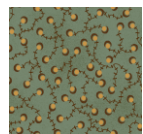
6673-88 ♦ 3/4 yd



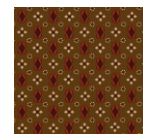
6676-77 ♦ 1/2 yd



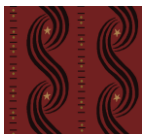
6671-66 ♦ 1/2 yd



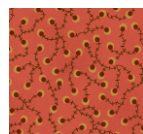
6674-11 ♦ 1 3/8 yds



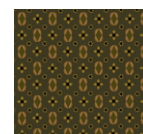
6677-33 ♦ 3/4 yd



6671-88 ♦ 1/2 yd



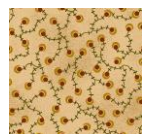
6674-22 ♦ 3/4 yd



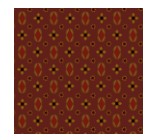
6677-66 ♦ 1/2 yd



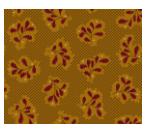
6671-99 ♦ 1 5/8 yds



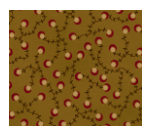
6674-40 ♦ 1 7/8 yds



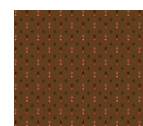
6677-88 ♦ 1/2 yd



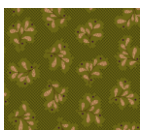
6672-44 ♦ 1/2 yd



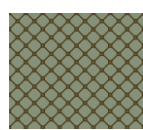
6674-44 ♦ 1/2 yd



6678-33 ♦ 1/2 yd



6672-66 ♦ 1/2 yd



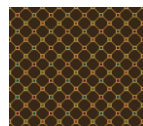
6675-11 ♦ 1/2 yd



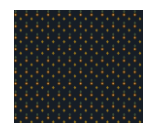
6678-40 ♦ 1 3/4 yds



6672-88 ♦ 1/2 yd



6675-33 ♦ 2 yds



6678-77 ♦ 3/4 yd



6675-40 ♦ 1 1/2 yds