

# Simple Whatnots Club

Collection 5 • Welcome Wagon

∞ by Kim Diehl ∞



◀ Barn Dance  
26½" x 26½"

▼ Harvest Stars  
14½" x 14½"



▲ Practice Makes Perfect  
21½" x 21½"

◀ All Dressed Up  
21½" x 21½"



▲ Cranberry Chutney  
Patchwork  
28½" x 28½"

◀ Cranberry Chutney  
Appliqué  
28½" x 28½"



▲ Galavanting  
28½" x 28½"



Henry Glass & Co., Inc.



# Welcome Wagon Fabrics in the Collection

Please visit [www.henryglassfabrics.com](http://www.henryglassfabrics.com) for Simple Whatnots Club shop guidelines.



6561-44



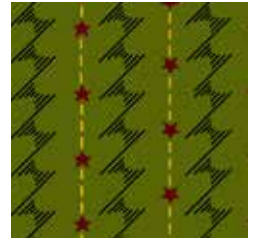
6561-55



6561-77



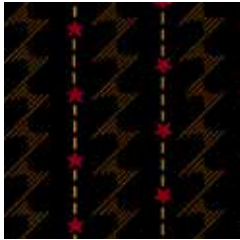
6561-88



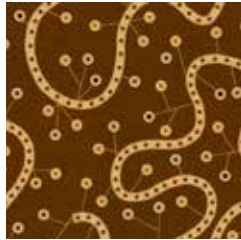
6562-66



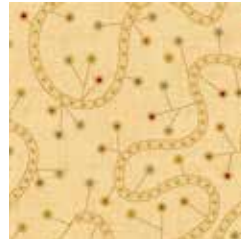
6562-88



6562-99



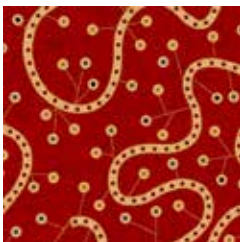
6563-33



6563-44



6563-66



6563-88



6564-30



6564-77



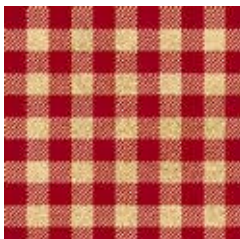
6564-88



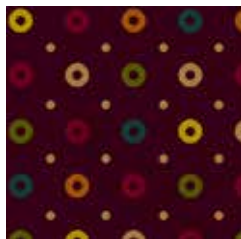
6565-44



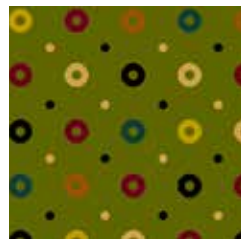
6565-77



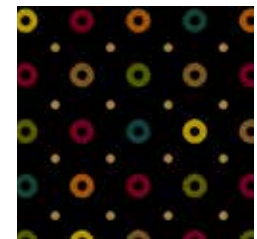
6565-88



6566-55



6566-66



6566-99



6567-30



6567-66



6567-88



6568-11



6568-22



6568-40



6568-44