

## SIMPLE WHATNOTS CLUB ~ COLLECTION 5

### Welcome Wagon Ordering Summary for One Complete Pattern Collection

Yardage amounts include quilt tops and binding and have been rounded up to the next 1/8 yard measurement for cutting needs. Backing requirements are not included.

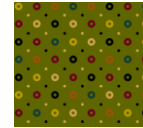
For calculating purposes it's assumed that either the patchwork *or* appliqué version of "Cranberry Chutney" will be made by any given club participant, not both projects; the yardage amounts provided will enable either version to be made.



6561-44 – 1 yd



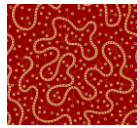
6563-66 – 1/2 yd



6566-66 – 1/2 yd



6561-55 – 1/2 yd



6563-88 – 1/2 yd



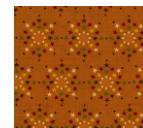
6566-99 – 3/4 yd



6561-77 – 1/2 yd



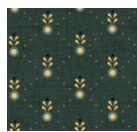
6564-30 – 1/2 yd



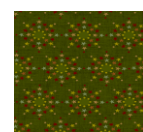
6567-30 – 1/2 yd



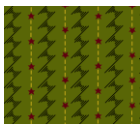
6561-88 – 1/2 yd



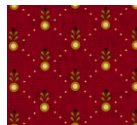
6564-77 – 1/2 yd



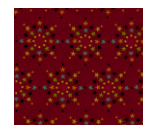
6567-66 – 1/2 yd



6562-66 – 1/2 yd



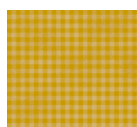
6564-88 – 1 3/4 yds



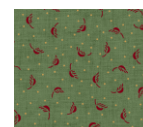
6567-88 – 1/2 yd



6562-88 – 2/3 yd



6565-44 – 1/2 yd



6568-11 – 1/2 yd



6562-99 – 3/4 yd



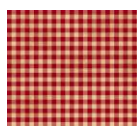
6565-77 – 1/2 yd



6568-22 – 1/2 yd



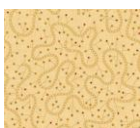
6563-33 – 3/4 yd



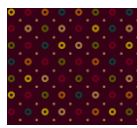
6565-88 – 1/2 yd



6568-40 – 3/4 yd



6563-44 – 1 1/2 yds



6566-55 – 1/2 yd



6568-44 – 1 1/2 yds